

Recommended Practices for Evaluation of Well Perforators

API RECOMMENDED PRACTICE 19B
SECOND EDITION, SEPTEMBER 2006



Recommended Practices for Evaluation of Well Perforators

Upstream Segment

API RECOMMENDED PRACTICE 19B
SECOND EDITION, SEPTEMBER 2006



SPECIAL NOTES

API publications necessarily address problems of a general nature. With respect to particular circumstances, local, state, and federal laws and regulations should be reviewed.

Neither API nor any of API's employees, subcontractors, consultants, committees, or other assignees make any warranty or representation, either express or implied, with respect to the accuracy, completeness, or usefulness of the information contained herein, or assume any liability or responsibility for any use, or the results of such use, of any information or process disclosed in this publication. Neither API nor any of API's employees, subcontractors, consultants, or other assignees represent that use of this publication would not infringe upon privately owned rights.

API publications may be used by anyone desiring to do so. Every effort has been made by the Institute to assure the accuracy and reliability of the data contained in them; however, the Institute makes no representation, warranty, or guarantee in connection with this publication and hereby expressly disclaims any liability or responsibility for loss or damage resulting from its use or for the violation of any authorities having jurisdiction with which this publication may conflict.

API publications are published to facilitate the broad availability of proven, sound engineering and operating practices. These publications are not intended to obviate the need for applying sound engineering judgment regarding when and where these publications should be utilized. The formulation and publication of API publications is not intended in any way to inhibit anyone from using any other practices.

Any manufacturer marking equipment or materials in conformance with the marking requirements of an API standard is solely responsible for complying with all the applicable requirements of that standard. API does not represent, warrant, or guarantee that such products do in fact conform to the applicable API standard.

Classified areas may vary depending on the location, conditions, equipment, and substances involved in any given situation. Users of this Recommended Practice should consult with the appropriate authorities having jurisdiction.

Users of this Recommended Practice should not rely exclusively on the information contained in this document. Sound business, scientific, engineering, and safety judgment should be used in employing the information contained herein.

Information concerning safety and health risks and proper precautions with respect to particular materials and conditions should be obtained from the employer, the manufacturer or supplier of that material, or the material safety data sheet.

Where applicable, authorities having jurisdiction should be consulted.

Work sites and equipment operations may differ. Users are solely responsible for assessing their specific equipment and premises in determining the appropriateness of applying the Recommended Practice. At all times users should employ sound business, scientific, engineering, and judgment safety when using this Recommended Practice.

API is not undertaking to meet the duties of employers, manufacturers, or suppliers to warn and properly train and equip their employees, and other exposed, concerning health and safety risks and precautions, nor undertaking their obligations to comply with authorities having jurisdiction.

All rights reserved. No part of this work may be reproduced, stored in a retrieval system, or transmitted by any means, electronic, mechanical, photocopying, recording, or otherwise, without prior written permission from the publisher. Contact the Publisher, API Publishing Services, 1220 L Street, N.W., Washington, D.C. 20005.

Copyright © 2006 American Petroleum Institute

FOREWORD

This document is under the jurisdiction of the API Subcommittee on Completion Equipment.

Nothing contained in any API publication is to be construed as granting any right, by implication or otherwise, for the manufacture, sale, or use of any method, apparatus, or product covered by letters patent. Neither should anything contained in the publication be construed as insuring anyone against liability for infringement of letters patent.

This document was produced under API standardization procedures that ensure appropriate notification and participation in the developmental process and is designated as an API standard. Questions concerning the interpretation of the content of this publication or comments and questions concerning the procedures under which this publication was developed should be directed in writing to the Director of Standards, American Petroleum Institute, 1220 L Street, N.W., Washington, D.C. 20005. Requests for permission to reproduce or translate all or any part of the material published herein should also be addressed to the director.

Generally, API standards are reviewed and revised, reaffirmed, or withdrawn at least every five years. A one-time extension of up to two years may be added to this review cycle. Status of the publication can be ascertained from the API Standards Department, telephone (202) 682-8000. A catalog of API publications and materials is published annually and updated quarterly by API, 1220 L Street, N.W., Washington, D.C. 20005.

Suggested revisions are invited and should be submitted to the Standards and Publications Department, API, 1220 L Street, NW, Washington, DC 20005, standards@api.org.

CONTENTS

| | Page |
|---|------|
| 0 SCOPE | 1 |
| 0.1 General | 1 |
| 0.2 Implementation | 1 |
| 0.3 API Registered Perforator Systems | 1 |
| 0.4 Reports and Advertisements | 1 |
| 1 EVALUATION OF PERFORATING SYSTEMS UNDER SURFACE CONDITIONS, CONCRETE TARGETS | 1 |
| 1.1 Introduction | 1 |
| 1.2 Test Target | 1 |
| 1.3 Perforating System Selection | 4 |
| 1.4 Charge Selection and Aging | 4 |
| 1.5 Multi-directional Firing Perforator Systems | 5 |
| 1.6 Uni-directional Perforator Systems | 5 |
| 1.7 Test Fluid | 5 |
| 1.8 Test Results Validity | 5 |
| 1.9 Data Collection | 5 |
| 1.10 Data Recording and Reporting | 8 |
| 1.11 Special API RP 19B Section 1 Tests | 8 |
| 2 EVALUATION OF PERFORATORS UNDER STRESS CONDITIONS, BEREA TARGETS | 8 |
| 2.1 Introduction | 8 |
| 2.2 Berea Sandstone Target | 8 |
| 2.3 Preparation of Berea Sandstone for the Target | 8 |
| 2.4 Test Apparatus | 10 |
| 2.5 Test Conditions and Procedure | 13 |
| 3 EVALUATION OF PERFORATOR SYSTEMS AT ELEVATED TEMPERATURE CONDITIONS, STEEL TARGETS | 15 |
| 3.1 Introduction | 15 |
| 3.2 Reference Data | 15 |
| 3.3 Test Target | 15 |
| 3.4 Perforating System Selection | 15 |
| 3.5 Charge Selection and Aging | 15 |
| 3.6 Gun Configuration | 15 |
| 3.7 Clearance | 16 |
| 3.8 Number of Shots | 16 |
| 3.9 Temperature Environment | 16 |
| 3.10 Test Fluid Environment | 16 |
| 3.11 Temperature Monitoring | 16 |
| 3.12 Test Assembly | 16 |
| 3.13 Data Collection and Recording | 16 |
| 3.14 Pressure Testing of the Gun System | 18 |
| 4 EVALUATION OF PERFORATION FLOW PERFORMANCE UNDER SIMULATED DOWNHOLE CONDITIONS | 19 |
| 4.1 Introduction | 19 |
| 4.2 Test Target | 19 |

CONTENTS

| | Page |
|--|------|
| 4.3 Testing Equipment | 19 |
| 4.4 Charge Selection and Aging | 20 |
| 4.5 Gun Configuration | 20 |
| 4.6 Systems Calibration | 20 |
| 4.7 Permeability Measurement | 20 |
| 4.8 Testing Procedure | 20 |
| 4.9 Data Recording | 21 |
| 4.10 Data Reduction | 21 |
| 4.11 Standard Test Conditions | 22 |
| 5 DEBRIS COLLECTION PROCEDURE FOR PERFORATING GUNS | 23 |
| 5.1 Hollow Carrier Perforating Guns | 23 |
| 5.2 Phase I | 23 |
| 5.3 Phase II | 24 |
| 5.4 Charge Case Debris Procedure | 25 |
| 5.5 Perforating Systems With Capsule Charges | 28 |
| 6 REFERENCES | 29 |
| APPENDIX A TEST TARGET AND EQUIPMENT—SECTION 4 TESTING | 31 |
| APPENDIX B PERMEABILITY MEASUREMENT—SECTION 4 TESTING | 35 |
| APPENDIX C DATA REDUCTION; EXPECTED FLOW RATES— SECTION 4 TESTING | 39 |
| APPENDIX D API REGISTERED PERFORATOR SYSTEMS | 41 |

Figures

| | |
|--|----|
| 1 Example Concrete Target | 2 |
| 2 Data Sheet—Perforating System Evaluation, API RP 19B Section 1 | 6 |
| 3 Dual String Data Sheet Perforating Systems Evaluation | 7 |
| 4 Section 2 Target Configuration | 9 |
| 5 Shooting End Fixture | 11 |
| 6 Vent End and Seal Fixture | 12 |
| 7 Data Sheet—Perforating System Evaluation | 14 |
| 8 Schematic Illustration of Steel Target for Elevated Temperature Test | 17 |
| 9 Gun Debris Data Sheet for Hollow Carrier Perforating Systems | 26 |
| 10 Gun Debris Data Sheet for Capsule Charge Perforating Systems | 30 |
| A.1 Typical Radial-Flow Geometry | 32 |
| A.2 Typical Axial-Flow Geometry | 32 |
| A.3 Schematic of Typical Testing Equipment | 33 |
| B.1 Typical Axial-Flow Permeability Equipment | 36 |
| B.2 Typical Diametral Flow Permeameter | 37 |

Tables

| | |
|--|---|
| 1 Permissible Variations of Specimen Mold | 3 |
| 2 Casing and Tubing for Use in Test Target | 4 |

Recommended Practices for Evaluation of Well Perforators

0 Scope

0.1 GENERAL

This Recommended Practice describes standard procedures for evaluating the performance of perforating equipment so that representations of this performance may be made to the industry under a standard practice. This document supersedes all previously issued editions of API RP 43.

Sections 1 – 4 of this Recommended Practice provides means for evaluating perforating systems (multiple shot) in 4 ways:

1. Performance under ambient temperature and atmospheric pressure test conditions.
2. Performance in stressed Berea sandstone targets (simulated wellbore pressure test conditions).
3. How performance may be changed after exposure to elevated temperature conditions.
4. Flow performance of a perforation under specific stressed test conditions.

Section 5 of this Recommended Practice provides a procedure to quantify the amount of debris that comes out of a perforating gun during detonation. The purpose of this Recommended Practice is to specify the materials and methods used to evaluate objectively the performance of perforating systems or perforators.

0.2 IMPLEMENTATION

These procedures become effective as of the date of publication.

0.3 API REGISTERED PERFORATOR SYSTEMS

Information on API Registration of perforator systems can be found in Appendix D.

0.4 REPORTS AND ADVERTISEMENTS

Reports, articles, papers, periodicals, advertisements, or similar publications which refer to results from tests conducted according to API RP 19B must not be worded in a fashion to denote that the American Petroleum Institute either endorses the result cited or recommends or disapproves the use of the perforating system described.

Use of data obtained under API RP 19B tests in reports, articles, papers, periodicals, advertisements, or other published material shall include, as a minimum, all test configuration data not specified by API RP 19B or left to the verifying company's choosing by API RP 19B and the average measured results of the test.

1 Evaluation of Perforating Systems Under Surface Conditions, Concrete Targets

1.1 INTRODUCTION

The purpose of this section is to describe recommended practices for evaluating perforating systems using concrete targets under multiple shot, ambient temperature, and atmospheric pressure test conditions.

1.2 TEST TARGET

The tests shall be conducted in a concrete target contained within a steel form as illustrated in Figure 1.

1.2.1 Target Preparation

Concrete for the target and test briquettes shall be mixed using a cement-sand-slurry consisting of the following:

- a. 1 part or 94 lb $\pm 1\%$ of API Class A or ASTM Type I cement
- b. 2 parts or 188 lb $\pm 1\%$ of dry sand (The sand shall meet API RP 56, Second Edition requirements for 16 – 30 frac sand. The sand shall be stored in a dry location prior to use.)
- c. 0.52 part or 49 lb $\pm 1\%$ of potable water

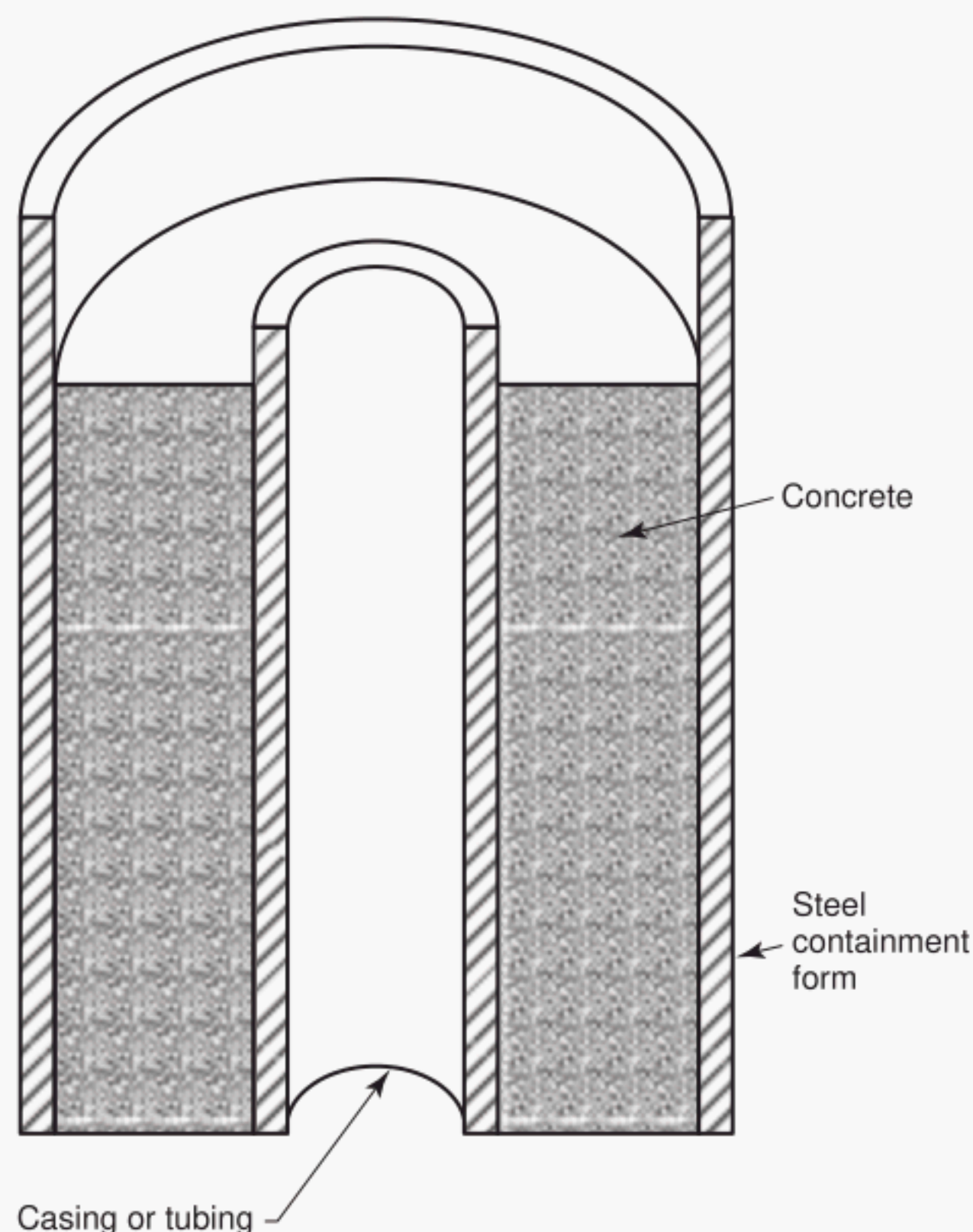


Figure 1—Example Concrete Target

1.2.2 Required Documentation

Each distinct quantity of concrete (truckload or similar) used in the preparation of a target must include a written report from the concrete supplier listing the actual amounts of cement, sand, and water used. Quantities shall be reported in the units utilized during the measuring process, with no conversions or adjustments.

The testing company shall maintain supporting documentation that the sand complies with API RP 56 for 16 – 30 frac sand. At a minimum, this shall consist of sieve analysis data for all loads of frac sand received by the concrete supplier.

1.2.3 Target Configuration

The shape of the outer target form shall be circular and the size determined by the shot pattern and anticipated penetrating capability of the perforating system to be tested. Positioning of the tubing or casing within the target shall be determined by the gun phasing used in the test. For zero-phased perforators, the casing or tubing shall be set in the target form such that a minimum of three inches of the specified concrete composition surrounds the tubing or casing in all directions.

1.2.4 Target Curing Conditions

The target shall be allowed to cure at a temperature within the concrete greater than 32°F (0°C) for a minimum of 28 days. The top surface of the concrete target shall be covered continuously during the entire curing period with a minimum of three inches of potable water. All strength test specimens shall be kept immersed in water at the same temperature as the concrete test target until they are used.

1.2.5 Target Compressive Strength Evaluation

Target compressive strength shall be evaluated using 2-in. cubes (briquettes) made from the same concrete as the target, prepared and tested as prescribed in 1.2.1 through 1.2.5. Prior to or within 24 hours after conducting a test, the briquettes shall be tested and must have an average compressive strength of not less than 5,000 psi.

1.2.5.1 Compressive Strength Evaluation Apparatus

The molds shall not have more than three cube compartments. The parts of the molds when assembled shall be positively held together. The molds shall be made of hard metal, not attacked by the cement mortar, with a Rockwell hardness number not less than 55 HRB. The sides of the mold shall be sufficiently rigid to prevent spreading or warping. The interior faces of the molds shall be plane surfaces and shall conform to the tolerances in Table 1. A base plate having a minimum thickness of $\frac{1}{4}$ in. shall be used.

Table 1—Permissible Variations of Specimen Mold

| Parameter | New | In Use |
|---|----------------------------|----------------------------|
| Planeness of side | <0.001 in. | <0.002 in. |
| Distance between opposite sides | 2 in., ± 0.005 in. | 2 in., ± 0.005 in. |
| Height of each compartment | 2 in., +0.01 to -0.005 in. | 2 in., +0.01 to -0.015 in. |
| Angle between adjacent faces ¹ | 90, $\pm 0.5^\circ$ | 90, $\pm 0.5^\circ$ |

Note: ¹Measured at points slightly removed from the intersection. Measured separately for each compartment between all the interior faces and the adjacent face and between interior faces and top and bottom planes of the mold.

The testing machine shall conform to the requirements in ASTM C 109. The molds shall be checked for tolerances and the testing machine shall be calibrated within $\pm 1\%$ of the load range to be measured at least once every two years.

1.2.5.2 Preparation of Molds

Apply a thin coating of release agent (WD-40^{®1} or similar aerosol lubricant for example) to the interior faces of the mold and contact surface of the base plate. Wipe the mold faces and base plate with a cloth as necessary to remove any excess release agent and to achieve a thin, even coating. Seal the surfaces where the halves of the mold join by applying a coating of light grease. The amount should be sufficient to extrude slightly when the two halves are tightened together. Remove any excess grease with a cloth. After placing the mold on its base plate (and attaching with clamps if applicable), apply grease to the exterior contact line of the mold and base plate to achieve a water tight seal.

1.2.5.3 Placing Slurry in Molds

The slurry sample shall be procured midway during the target pour. For large targets requiring multiple concrete trucks, the sample shall be taken from the truck filling the middle portion of the target. Preparation of the specimens shall begin within 15 minutes of procuring the sample. Stir the slurry by hand using a non-absorbent spatula or puddling rod to minimize segregation. Place slurry in each specimen compartment in the prepared molds in a layer equal to one-half of the mold depth. The slurry shall be placed in all the specimen compartments before commencing the puddling operation. Puddle each specimen 25 times using a glass or noncorroding metal rod approximately 8 in. long by $\frac{1}{4}$ in. in diameter. After puddling the layer, the remaining slurry shall again be stirred. Fill the molds to overflowing and puddle as with the first layer. After puddling, the excess slurry shall be struck even with the top of the mold, using a straightedge. Specimens in molds which show evidence of leaking shall be discarded. For one test determination, not less than six specimens shall be prepared.

1.2.5.4 Curing of Specimens

As soon as possible, but no more than 2 hours after preparation, the molds shall be placed in the water on the top of the Section 1 target. The top of the Section 1 target must have firmed sufficiently to support the molds. The water level in the top of the target must be kept high enough to completely cover each mold. Within 20 – 23 hours after initial placement, remove the molds from the water, remove the specimens from the molds, and place the specimens in a white, plastic container, filled with potable water.

¹This term is used as an example only, and does not constitute an endorsement of this product by API.

Place the container in the water on top of the Section 1 target, where it shall remain for the entire curing period. The container must be at least 6 in. deep, and the specimens shall remain fully submerged in the water until immediately prior to being tested.

1.2.5.5 Specimen Testing

Wipe each specimen to a surface-dry condition and remove any loose material from the faces that will be in contact with the bearing blocks of the testing machine. Check these faces by applying a straightedge. If there is appreciable curvature, grind the face or faces to plane surfaces or discard the specimen.

Apply the load to specimen faces that were in contact with the plane surfaces of the mold. Center the specimen in the testing machine below the upper bearing block. Prior to the testing of each cube, it shall be ascertained that the spherically seated block is free to tilt. The load surfaces shall be clean. Use no cushioning or bedding material. Appropriate safety and handling procedures shall be employed in testing the specimen.

- a. The rate of loading shall be 16,000, \pm 1600 lbf (4000, \pm 400 psi) per minute. Make no adjustment to the controls of the testing machine while a specimen is yielding before failure.
- b. The compressive strength is calculated by dividing the maximum load in lbf by cross-sectional area in square inches. If deviations of $1/16$ inch or more from the specified linear dimension of 2.00 inches are reported, use the actual area for the calculation of the compressive strength. In determining the compressive strength, do not consider specimens that are manifestly faulty. The maximum permissible range between specimens is 8.7% of the average. If this range is exceeded, discard the result that differs the most, and check the range of the remaining specimens. Repeat until the results comply with the maximum permissible range. A minimum of three specimens is required for a valid test. The compressive strength of all acceptable test specimens shall be averaged and reported to the nearest 10 psi.

1.2.6 Casing or Tubing to be Used in Target

Casing or tubing sizes, weights, and grades to be used in the target are shown in Table 2.

Table 2—Casing and Tubing for Use in Test Target

| Pipe Size, OD in. | Pipe Nominal Weight, lb/ft | Casing or Tubing, API Grade |
|--------------------------------|-------------------------------|--------------------------------|
| 2 ³ / ₈ | 4.6 | L-80 |
| 2 ⁷ / ₈ | 6.4 | L-80 |
| 3 ¹ / ₂ | 9.2 | L-80 |
| 4 ¹ / ₂ | 11.6 | L-80 |
| 5 | 15.0 | L-80 |
| 5 ¹ / ₂ | 17.0 | L-80 |
| 7 | 32.0 | L-80 |
| 7 ⁵ / ₈ | 33.7 | L-80 |
| 8 ⁵ / ₈ | 40.0 | L-80 |
| 9 ⁵ / ₈ | 47.0 | L-80 |
| 10 ³ / ₄ | 51.0 | L-80 |
| 11 ³ / ₄ | 54.0 | L-80 |
| 13 ³ / ₈ | 61.0 | L-80 |

1.3 PERFORATING SYSTEM SELECTION

The perforating system to be tested shall consist of standard field equipment, including a sufficient length of continuously loaded active gun, shot density, phasing, charges, explosive accessories, and other component parts representative of standard field equipment. Selection of the charges must conform to 1.4.

Exception: If a debris test is to be conducted concurrently with the Section 1 test, the bottom sub/plug must be solid or blanked off to minimize the sump affect.

1.4 CHARGE SELECTION AND AGING

The required number of charges shall be samples taken uniformly from a minimum production run of 1000 RDX or PETN charges (a production run of only 300 charges is required for high temperature explosives) and packaged in the manufacturing/

service company's standard shipping containers. A minimum production run is a continuous run which may span multiple shifts in order to meet the required minimum quantities. These charges shall be stored for a minimum of four weeks prior to testing to allow some aging to occur. Charges shall be selected from one or more unopened containers.

1.5 MULTI-DIRECTIONAL FIRING PERFORATOR SYSTEMS

For multi-directional firing perforator systems, a sufficient length of continuously loaded active gun shall be tested to provide a minimum of 12 shots or one foot of continuously loaded gun, whichever provides more shots. The perforating device shall be shot as it is normally positioned in the casing.

1.6 UNI-DIRECTIONAL PERFORATOR SYSTEMS

Uni-directional perforator systems, without positioning devices, shall be tested in two positions. In one position, all shots shall be fired at maximum clearance. In the other position all shots shall be fired at minimum clearance. A minimum of 8 shots shall be fired from each position. Perforator systems with positioning devices shall be fired in the position assumed in a well. A minimum of 12 shots shall be fired.

1.7 TEST FLUID

Water shall be used as the test fluid in testing all perforating systems.

1.8 TEST RESULTS VALIDITY

No test shall be considered valid if the average depth of penetration of the concrete target is within three inches of the terminal boundary of the target. Any shots that penetrate the terminal boundary of the concrete target or are within the top 12 inches or bottom 6 inches of the concrete target shall be noted in the reported data, but shall not be counted in averaging the penetration data from the test.

1.9 DATA COLLECTION

The following measurements shall be made for each perforating system evaluated:

- a. Total penetration depth.
- b. Casing or tubing hole diameter.
- c. Burr height.

All perforator individual or averaged penetration depths shall be reported to the nearest 0.1 inch.

1.9.1 Total Penetration Depth

The total depth shall be reported as the distance from the original inside wall of the casing or tubing to the end of the perforation tunnel. The end of the perforation tunnel shall be established as that point where concrete material strength damage ends as qualitatively indicated by manual scraping/probing of the exposed material surface.

1.9.2 Casing or Tubing Hole Diameter

The casing or tubing hole diameter shall be measured along the short and long elliptical axes and reported along with the average of the two measurements. Such measurements shall be made from outside the casing or tubing (prior to cutting) with a caliper, whose arms readily pass through the perforation. The short axis shall be the smallest through-hole diameter measured. Casing or tubing hole diameter shall be reported to the nearest 0.01 inch.

1.9.3 Burr Height

The maximum protrusion from the inside casing or tubing wall next to the perforation shall be measured and reported as the burr height. If debris from the perforator is lodged in the perforation hole in the casing or tubing and cannot be removed with finger pressure, the total height of such obstruction shall be recorded as burr height and explained. Burr height shall be reported to the nearest 0.01 inch.

API Form 19B-Section 1

☐ Conforms to All Requirements of Section 1

☐ Special Test – See Remarks/Exceptions below

Service Company

Explosive Weight gm, powder, Case Material

Gun OD & Trade Name

Max. Temp, °F 1 hr 3 hr 24 hr 100 hr 200 hr

Charge Name

Maximum Pressure Rating psi, Carrier Material

Manufacturer Charge Part No. Date of Manufacture

Shot Density Tested Shots/ft.

Gun Type

Recommended Minimum ID for Running in.

Phasing Tested degrees, Firing Order Top Down, Bottom Up

Available Firing Mode Selective, Simultaneous

Debris Description

Debris Weight gm/charge, Debris in³/charge

Remarks/Exceptions per Section 1.11

Casing Data OD, Weight lb/ft, API Grade, Date of Section 1 Test

Target Data OD, Amount of Cement lb., Amount of Sand lb., Amount of Water lb.

Date of Compressive Strength Test Briquette Compressive Strength psi, Age of Target days

| | | | | | | | | | | | | |
|---|--------|--------|--------|--------|--------|--------|--------|--------|--------|--------|--------|---------|
| Shot No. | No. 1 | No. 2 | No. 3 | No. 4 | No. 5 | No. 6 | No. 7 | No. 8 | No. 9 | No. 10 | No. 11 | |
| Clearance, in. | | | | | | | | | | | | |
| Casing Hole Diameter, Short Axis, in... | | | | | | | | | | | | |
| Casing Hole Diameter, Long Axis, in... | | | | | | | | | | | | |
| Average Casing Hole Diameter, in..... | | | | | | | | | | | | |
| Total Depth, in. | | | | | | | | | | | | |
| Burr Height, in. | | | | | | | | | | | | |
| Shot No. | No. 12 | No. 13 | No. 14 | No. 15 | No. 16 | No. 17 | No. 18 | No. 19 | No. 20 | No. 21 | No. 22 | Average |
| Clearnce, in. | | | | | | | | | | | | XXXXXX |
| Casing Hole Diameter, Short Axis, in... | | | | | | | | | | | | |
| Casing Hole Diameter, Long Axis, in... | | | | | | | | | | | | |
| Total Depth, in. | | | | | | | | | | | | |
| Burr Height, in. | | | | | | | | | | | | |

MANUFACTURER'S CERTIFICATION

Type of Certification: Self Third Party

I certify that these tests were made according to the procedures as outlined in API RP 19B: Recommended Practices for Evaluation of Well Perforators, Second Edition, September, 2006. All of the equipment used in these tests, such as the guns, jet charges detonator cord, etc., was standard equipment with our company for the use in the gun being tested and was not changed in any manner for the test. Furthermore, the equipment was chosen at random from stock and therefore will be substantially the same as the equipment that would be furnished to perforate a well for any operator. API neither endorses these test results nor recommends the use of the perforator system described.

CERTIFIED BY

RECERTIFIED (Company Official) (Title) (Date) (Company) (Address)

Figure 2—Data Sheet—Perforating System Evaluation, API RP 19B Section 1

DUAL STRING DATA SHEET PERFORATING SYSTEMS EVALUATION, Special Test (API RP 19B Section 1 with Exceptions)Page 1 of 1

Service Company

Gun O.D. and Trade Name

Charge Name

Manufacturer Charge Part Number

Gun Type

Phasing

Explosive Weight

Max Temp F:

Max Pressure Rating

Shot Density Tested

Recommended Minimum I.D. for Running

Available Firing Mode:

gms

Type

Case Mat.

1 hr.

3 hr.

24 hr.

100 hr.

psi

Gun Mat.

steel

shots/ft.

in.

Selective

Simultaneous

Remarks:

SECTION 1 - DUAL STRING CONCRETE TARGET INFORMATION

Casing No. 1

O.D.

Wt.

lb./ft.

API Grade

Target Diameter

in.

Amount of Cement

lb.

Casing No. 2

O.D.

Wt.

lb./ft.

API Grade

Amount of Sand

lb.

Amount of Water

lb.

Date of Test

Target Age

days

Casing Annulus Material

water

Briquette Test Date

psi

Note 1-Special Tests allowable exceptions: Dual string casing is allowed in this target. The casings may be other than those listed in Table 2. Casing annulus material may be other than cement.

TEST DATA

Shot Number.....

Casing Number.....

Water CL / Casing Annulus, in.....

Casing Hole Dia, Short Axis, in.

Casing Hole Dia, Long Axis, in.

Average Casing Hole Dia, in.

Total Penetration Depth, in.

Burr Ht. in Casing Number 1, in.

No. 1

No. 2

No. 3

No. 4

No. 5

No. 6

No. 7

No. 8

No. 9

Shot Number.....

Casing Number.....

Water CL / Casing Annulus, in.....

Casing Hole Dia, Short Axis, in.

Casing Hole Dia, Long Axis, in.

Average Casing Hole Dia, in.

Total Penetration Depth, in.

Burr Ht. in Casing Number 1, in.

No. 10

No. 11

No. 12

No. 13

No. 14

No. 15

No. 16

No. 17

No. 18

Average

MANUFACTURER'S CERTIFICATION

I certify that these tests were made according to the procedures as outlined in API RP 19B: Recommended Practices for Evaluation of Well Perforators, Second Edition, September 2006 with the allowable exceptions as listed in Note 1. All of the equipment used in these tests, such as guns, jet charges, detonator cord, etc., was standard equipment with our company for use in the gun being tested and was not changed in any manner. Furthermore, the equipment was chosen at random from stock and therefore will be substantially the same as the equipment, which would be furnished to perforate a well for any operator. API neither endorses these tests results nor recommends the use of the perforator system described.

CERTIFIED BY:

RECERTIFIED BY:

(Company Official)

(Title)

(Date)

(Company)

(Address)

Figure 3—Dual String Data Sheet Perforating Systems Evaluation

1.10 DATA RECORDING AND REPORTING

Data shall be reported on all shots fired or attempted. Data shall be reported in the same order that it was shot ballistically, with #1 being the first charge shot. See Figure 2 for an example data sheet. Any data sheet used must include a similarly positioned watermark indicating that the test is not registered with the API. Comments regarding other gun system configurations should not be included.

1.11 SPECIAL API RP 19B SECTION I TESTS

Well environments may require that special tests be conducted to better simulate down hole conditions. Some conditions require special casing. In some cases even dual string casing, is placed over a producible zone. In other situations gas environments may require the use of special gun systems. Operators must be able to evaluate perforating systems under these conditions with special tests.

This section provides a means to shoot and publish a witnessed test in a Special API RP 19B Section 1 Target, with any or all of the following exceptions.

1. Special casing may be used.
2. Dual string casing may be used.
3. The gun may be shot with air instead of water in the gun to casing annulus.

All other API RP 19B Section 1 requirements must be met. All exceptions must be listed in the remarks section of the appropriate data sheet (see Figure 2 or 3).

Casing annulus material should be RP 19B cement unless otherwise specified by the customer.

Single string tests must be reported on the Special Test form provided by API. See Figure 2.

Dual string test must be reported on the Special Dual String Test form also provided by API. See Figure 3.

2 Evaluation of Perforators Under Stress Conditions, Berea Targets

2.1 INTRODUCTION

This section is intended to provide a test procedure to be followed for measuring perforator performance in stressed Berea sandstone with wellbore pressure applied.

2.2 BEREASANDSTONE TARGET

Tests will be conducted using Berea sandstone targets mounted as shown in Figure 4. Berea sandstone target material shall have a bulk porosity of not less than 19% nor more than 21%.

2.3 PREPARATION OF BEREASANDSTONE FOR THE TARGET

2.3.1 Size

For charges 15 grams or less, a 4-inch ($\pm 3\%$) diameter core will be cut from a large block of Berea sandstone. For charges exceeding 15 grams, a 7-inch ($\pm 3\%$) diameter core will be cut from a large block of Berea sandstone. Depending on the expected perforation depth, the total length of the core shall approximate 12, 15, 18, 21, 24, or 27 inches, measured to within ± 0.25 -inch. The test will be considered valid if at least 3 inches of unpenetrated core remains.

2.3.2 Cutting

The core may be lathe turned or cut with a core barrel.

2.3.3 Drying

The cut and sized core shall be dried at least 24 hours, or to constant weight in a ventilated oven maintained at 200°F, but not above 210°F.

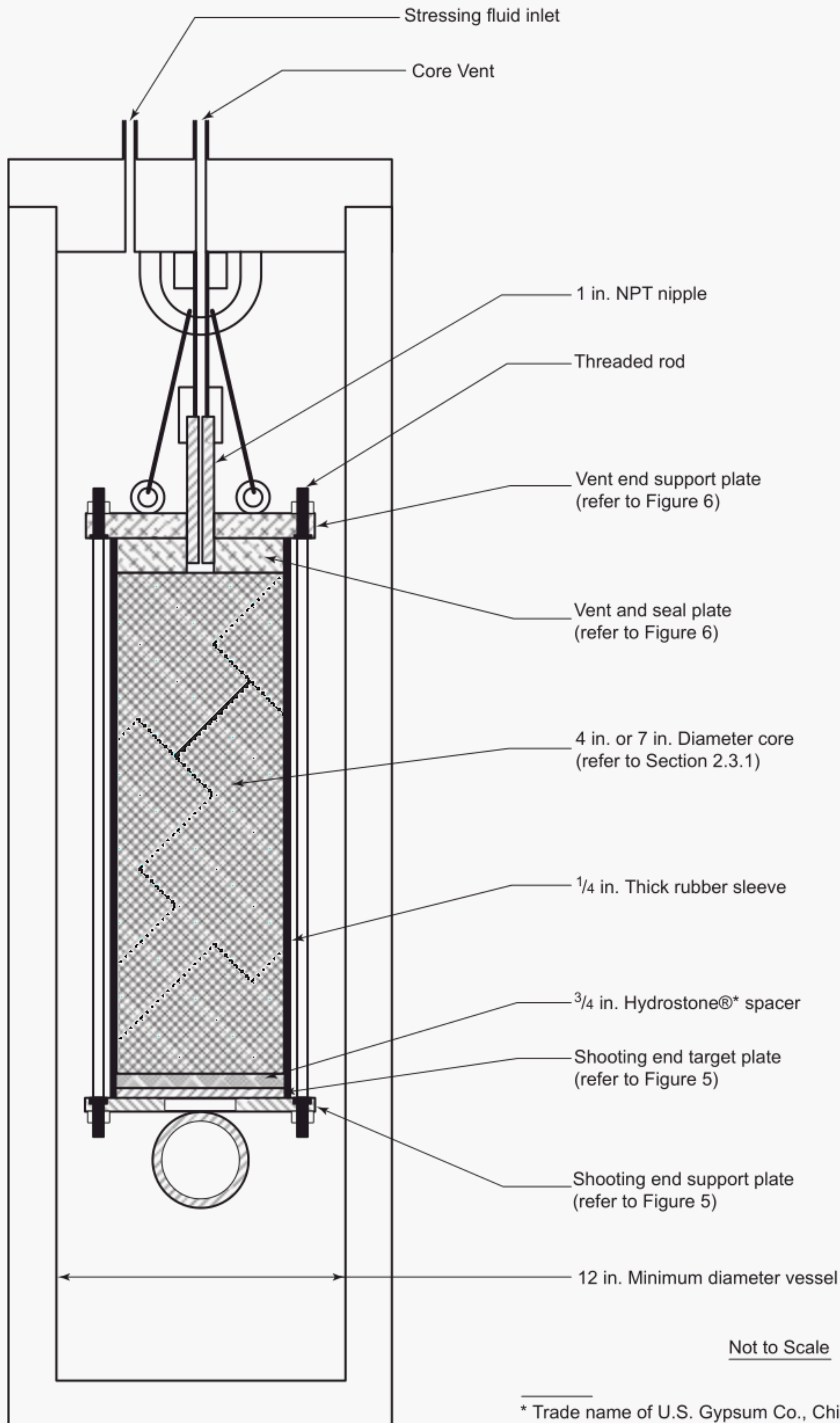


Figure 4—Section 2 Target Configuration

2.3.4 Evacuation

The core shall be evacuated in an airtight chamber provided with a suitably sized evacuation port and pump. There shall also be provided a means of admitting the saturating liquid slowly to the bottom of the chamber in order that the core can be covered with the liquid from the bottom to its top while under vacuum. The core shall be evacuated to a pressure of 1 millimeters of mercury or less for a minimum of 6 hours before admitting the saturating fluid. The saturating fluid shall not be admitted at a rate faster than the capillary rise of the fluid in the core.

2.3.5 Saturation

The saturating liquid shall be 3% (by weight) sodium chloride brine (specific gravity to be measured at ambient temperature to the nearest thousandth) prepared from sodium chloride and distilled or deionized water. The 3% brine solution shall be evacuated under medium to low vacuum (50 mm Hg pressure) for 30 minutes before use in order to remove dissolved gases, but not enough to increase the salt concentration appreciably. After the core is flooded in the evacuation chamber, vacuum (60 mm Hg pressure or lower) is to be maintained for 2 hours, after which the pressure is to be slowly increased to atmospheric pressure. The restored-state core should be kept stored under the 3% brine until porosity determinations are made. Kerosene may be substituted for the 3% sodium chloride brine.

2.3.6 Porosity Determination

After saturation, the core shall be wiped lightly to remove free brine from the surface and weighed immediately. The porosity shall be calculated by the following formula:

$$\Phi = (V_p V_b) (100) \quad (2-1)$$

The pore volume, V_p , shall be calculated by dividing the difference in weight in the saturated and dry states by the density of the 3% brine. The bulk volume, V_b , shall be calculated from physical measurements of each individual core. The weight shall be determined at room temperature on scales with a precision of 1 gram for loads of 1,000 grams or more.

2.3.7 Core Storage

Cores shall be stored in the 3% brine during the interval between obtaining the core characteristics and shooting operations.

2.4 TEST APPARATUS

2.4.1 Rubber Sleeve

For charges 15 grams or less, the sleeve shall have an internal diameter of 4 inches and a wall thickness of 0.25 inch. For charges larger than 15 grams, the sleeve shall have an internal diameter of 7 inches and a wall thickness of 0.25 inch.

2.4.2 Target End Fixtures

The shooting end fixture shall contain a mild steel faceplate 0.38 inch thick cut from ASTM A 36 grade steel and a 0.75 inch thick Hydrostone^{®2} spacer. The 0.75 inch Hydrostone[®] spacer may be poured in place or prepared separately at the discretion of the tester. Hydrostone[®] must be used in accordance with the manufacturer's instructions. Refer to Figure 5 for details of the shooting end fixture and Figure 6 for details of the vent end fixture.

2.4.3 Vent Tube

The vent tube shall be a nominal 1-inch outside diameter NPT steel tube with a minimum inside diameter of 0.25 inch.

²This term is used as an example only, and does not constitute an endorsement of this product by API.

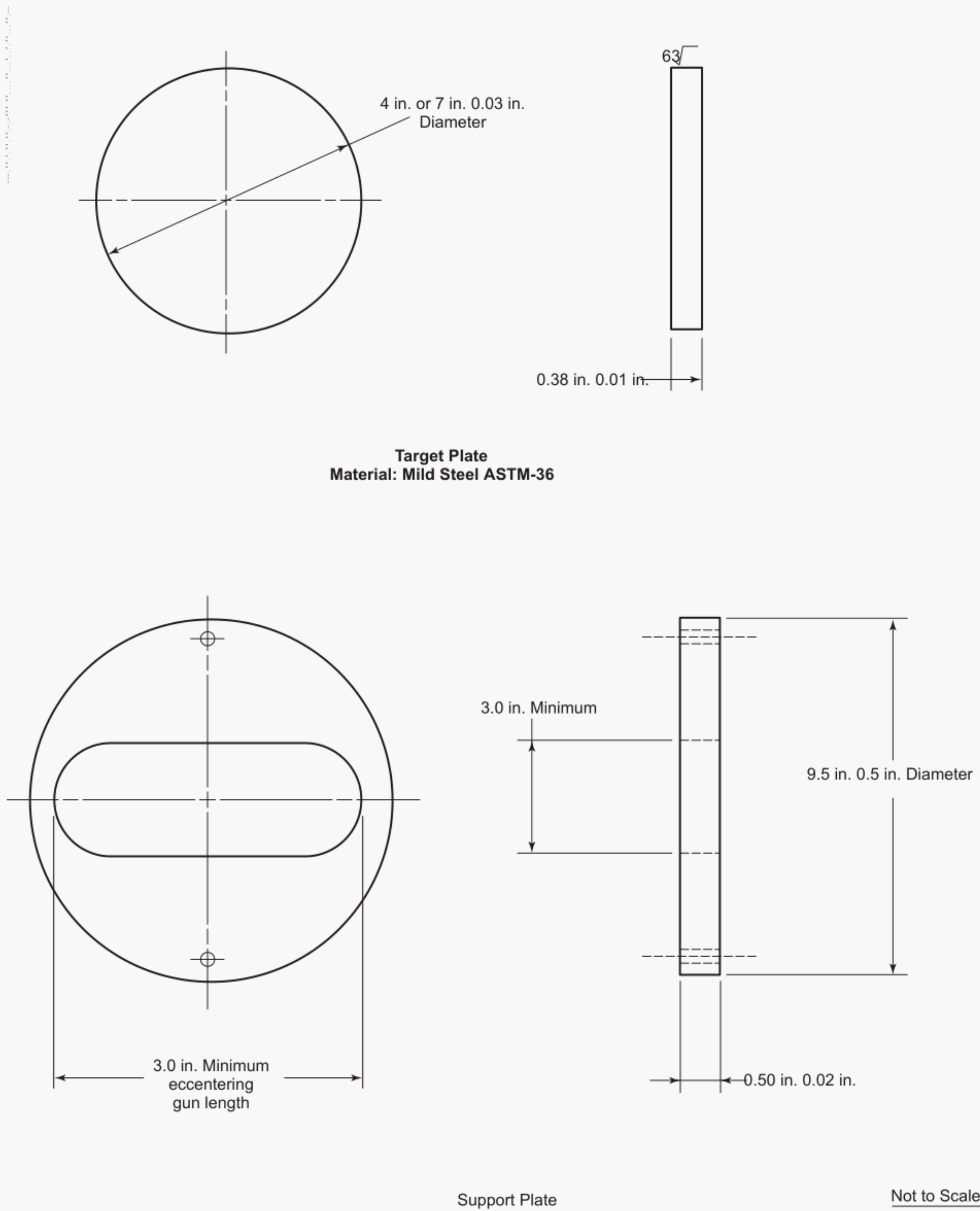


Figure 5—Shooting End Fixture

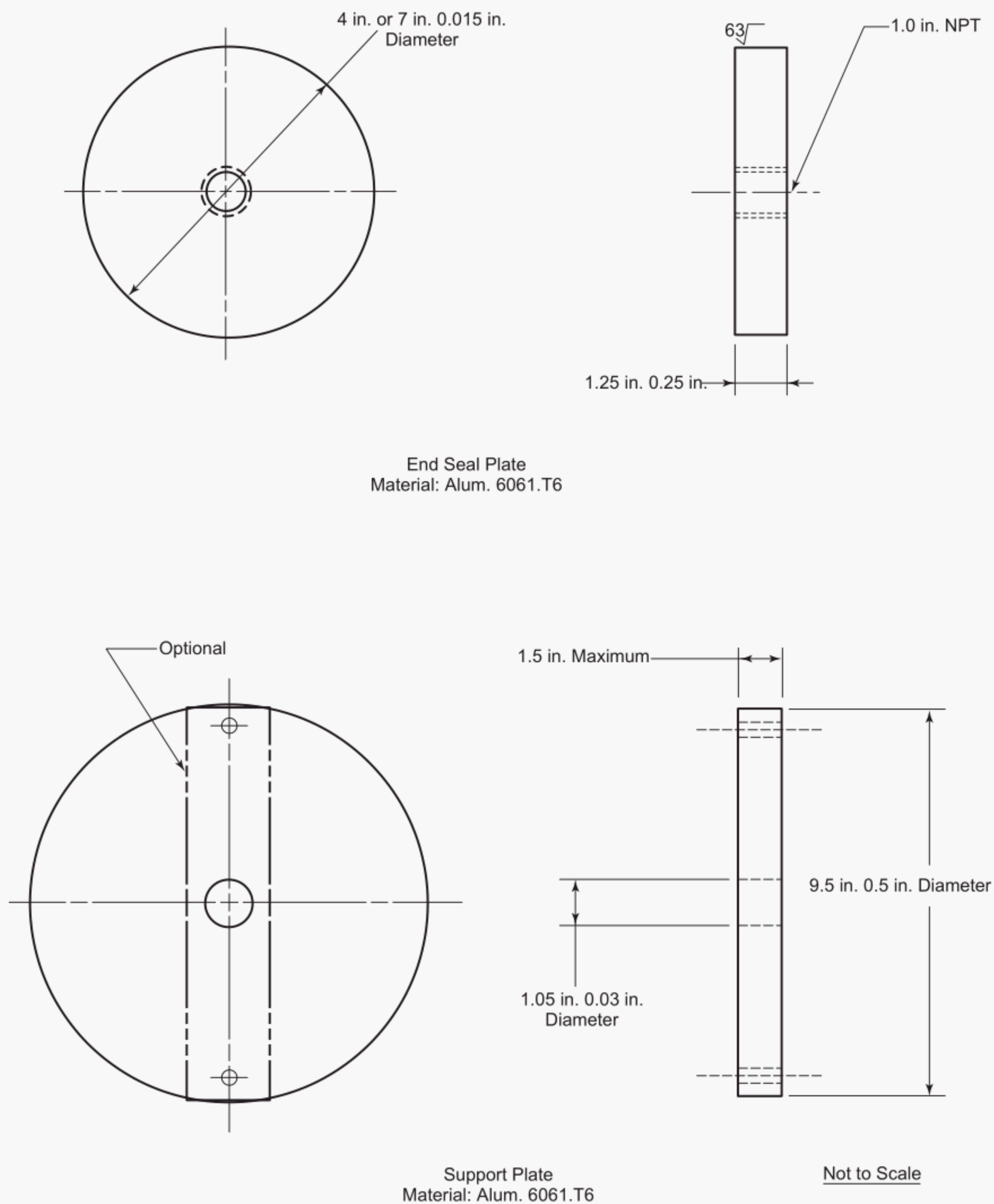


Figure 6—Vent End and Seal Fixture

2.4.4 Pressure Vessel

The minimum inside diameter of the pressure vessel shall be 12 inches. Suitable pressure sensing and remote recording equipment shall be used to obtain a permanent record of the pressure profile for the complete test. All equipment must be calibrated against a suitable reference standard at intervals not exceeding six months.

2.4.5 Mounting of Core Target

The gun shall be sufficiently secured to the core target to assure correct clearance and alignment. If bolts are used to hold the shooting end fixture and vent tube end fixture to the core, the end fixture must be free to travel in the direction of the core so as to transmit the stress uniformly. The entire target shall be centralized (± 1.0 inch) in the shooting vessel (refer to Figure 4).

2.4.6 Perforating Tool

The tool to be tested will be a single-shot section of the gun. This gun section must be a duplicate of the field gun.

2.5 TEST CONDITIONS AND PROCEDURE

2.5.1 Chamber Fluid

The chamber fluid shall be water and maintained at ambient temperature throughout the test.

2.5.2 Clearance

With the exception of zero-phased perforators used with eccentricing devices, bullet and jet perforators shall be tested at a clearance of 0.5 inch. Zero-phased perforators used with eccentricing devices shall be tested at the clearance assumed in a well.

2.5.3 Charge Selection and Aging

The required number of charges shall be samples taken uniformly from a minimum production run of 1000 RDX or PETN charges (a production run of only 300 charges is required for high temperature explosives) and packaged in the manufacturing/service company's standard shipping containers. These charges shall be stored for a minimum of four weeks prior to testing to allow some aging to occur.

2.5.4 Number of Shots

Tests are to consist of a minimum of three shots made under stated conditions. Test shot results must be indicative of average performance expected from production charges.

2.5.5 Firing Pressure

The pressure vessel will be pressured to 3,000 psi. The system will be held static for 5 minutes before shooting to check for leaks. If the core is fully saturated there should be a small fluid flow initially from the vent tube, until stress equalization occurs. The perforating gun is fired with a closed system. The pressure gauges and pumps are thus protected from the shock of firing.

2.5.6 Determination of Depth of Penetration

The depth of penetration shall be determined by the maximum depth from the exterior steel face plate to the end of the perforation tunnel, as determined by probing for weakened rock beyond the perforation tip.

2.5.7 Faceplate Hole Diameter

The hole diameter shall be measured along the short and long elliptical axes and reported along with the average of the two measurements. Such measurements shall be made from outside the faceplate with a caliper, whose arms readily pass through the perforation. The short axis shall be the smallest through hole diameter measured. Hole diameter shall be reported to the nearest 0.01 inch.

API Form 19B-Section 2

Service Company

Explosive Weight gm, powder, Case Material

Charge Name

Max. Temp, °F 1 hr 3 hr 24 hr 100 hr 200 hr

Manufacturer Charge Part No. Date of Manufacture

Maximum Pressure Rating psi,

Gun Type

Available Firing Mode Selective, Simultaneous

Remarks

| | Shot No. | No. 1 | No. 2 | No. 3 | No. 4 | No. 5 | No. 6 | Average |
|------------------------|---|-------|-------|-------|-------|-------|-------|---------|
| Berea Bulk Porosity, % | Faceplate Hole Diameter, Short Axis, in. | | | | | | | |
| | Faceplate Hole Diameter, Long Axis, in. | | | | | | | |
| Date of Beria Test, | Average Faceplate Hole Diameter, in. | | | | | | | |
| | Total Depth, in..... | | | | | | | |

MANUFACTURER'S CERTIFICATION

Type of Certification: Self Third Party

I certify that these tests were made according to the procedures as outlined in API RP 19B: Recommended Practices for Evaluation of Well Perforators, Second Edition, September, 2006. All of the equipment used in these tests, such as the guns, jet charges detonator cord, etc., was standard equipment with our company for the use in the gun being tested and was not changed in any manner for the test. Furthermore, the equipment was chosen at random from stock and therefore will be substantially the same as the equipment that would be furnished to perforate a well for any operator. API neither endorses these test results nor recommends the use of the perforator system described.

CERTIFIED BY

RECERTIFIED (Company Official) (Title) (Date) (Company) (Address)

Figure 7—Data Sheet—Perforating System Evaluation, API RP 19B Section 2

2.5.8 Control of Perforation End Position in Target

In 4-inch diameter targets, the perforation tip must be within 1.25 inches of the centerline of the core for the test to be considered valid. In 7-inch diameter targets, the perforation tip must be within 2.0 inches of the centerline of the core for the test to be considered valid.

2.5.9 Recording of Data

Data from tests performed under Section 2 of API RP 19B, shall be reported. See Figure 7 for an example data sheet. Any data sheet used must include a similarly positioned watermark indicating that the test is not registered with the API. Comments regarding other gun system configurations should not be included.

3 Evaluation of Perforator Systems at Elevated Temperature Conditions, Steel Targets

3.1 INTRODUCTION

The purpose of this test is to evaluate perforating systems at elevated temperature and atmospheric pressure. Systems employing any type explosive may be evaluated by this method. The test is conducted at temperature, with atmospheric pressure external to the gun to evaluate explosive system reliability, and utilizing steel as the target material.

Separate tests are conducted at temperature, pressure, and time to verify the operational rating of the system. This is intended as a procedure to be followed for a special test.

3.2 REFERENCE DATA

A reference charge test shall be conducted at atmospheric pressure and ambient temperature employing the steel target and the test described herein.

3.3 TEST TARGET

Tests shall be conducted with a laminated target consisting of mild-steel (ASTM A36) flat plates, 1 inch thick with a faceplate $\frac{3}{8}$ inch thick. Cross sectional area of the plates shall be chosen for repeatable data collection. Typical target configuration is shown in Figure 8. The target thickness must be at least 0.5 inch greater than the average penetration depth recorded.

3.4 PERFORATING SYSTEM SELECTION

The perforating system to be tested shall consist of the gun associated hardware, and firing head. Production equipment (or specially modified hardware to the same specification) shall be utilized, including gun body, adapters, transfer subs, and explosive components. The free volume to explosive load ratio must be the same or less than a fully loaded field configuration gun: or previously established in a separate test by firing a minimum of one charge after holding at time and temperature at an equal or lower free volume to explosive load ratio for this explosive. For tubing conveyed systems, at least one transfer must be demonstrated on the same or a separate test utilizing a production transfer sub. At least one charge shall be fired subsequent to the transfer. For wireline conveyed systems, any electrical or mechanical switches shall be included if recommended by the service company for this application, unless previously qualified in a separate test.

3.5 CHARGE SELECTION AND AGING

The required number of charges shall be samples taken uniformly from a minimum production run of 1000 RDX or PETN charges (a production run of only 300 charges is required for high temperature explosives) and packaged in the manufacturing/service company's standard shipping containers. These charges shall be stored for a minimum of four weeks prior to testing to allow some aging to occur.

3.6 GUN CONFIGURATION

Hollow carrier perforating guns must have pressure-tight enclosures on both ends and must be sealed during full duration of the test.

3.7 CLEARANCE

The gun-to-target clearance for all perforating systems shall be zero inches from the outside diameter of the gun body.

3.8 NUMBER OF SHOTS

For statistical purposes a minimum of six shots shall be fired in the heated gun and the reference gun.

3.9 TEMPERATURE ENVIRONMENT

Tests shall be conducted at elevated temperature and atmospheric pressure using the following procedures:

- a. The shots shall be made at temperature ($\pm 10^{\circ}\text{F}$) after the perforating system has been exposed to the rated temperature for the rated time period, which is one hour for wireline application, or a minimum of 100 hours for tubing conveyed application.
- b. The perforating system shall be brought to the rated elevated temperature at a maximum rate of six degrees per minute.
- c. Average temperature of the test assembly shall be controlled to $\pm 10^{\circ}\text{F}$ during the exposure period. Fluctuations out of this range are allowable if the time out of the envelope is less than 10% of the total exposure time. Actual average temperature shall be reported.

3.10 TEST FLUID ENVIRONMENT

The reference test (refer to 3.2) and elevated temperature test shall be similarly conducted in air or an appropriate liquid environment, at the option of the testing company. A continuous fluid media shall be used to transfer heat to the gun.

3.11 TEMPERATURE MONITORING

The temperature of the outer surface of the perforating gun adjacent to the top and bottom shot shall be separately monitored by intimate contact throughout the course of the test. The thermocouple shall be accurately shielded to ensure accurate surface gun body temperature. Suitable thermal sensing and remote recording equipment shall be used to obtain a permanent record of the temperature profile for the complete test. All equipment shall be calibrated and certified on a regular basis.

3.12 TEST ASSEMBLY

The method used to mount the steel targets to the perforating system shall be at the option of the testing company.

3.13 DATA COLLECTION AND RECORDING

The following measurements shall be made for each perforating system evaluated:

- a. Total depth.
- b. Faceplate hole diameter.
- c. Faceplate hole roundness.

3.13.1 Total Depth

The total depth shall be measured as the distance from the inside faceplate of the target to the farthest point penetrated by the shaped charge perforating system. The penetration shall be measured to the nearest 0.01 inch. The data shall be expressed as a ratio of the average hot/cold penetration.

3.13.2 Faceplate Hole Diameter

The faceplate hole diameter shall be measured on the inside $3/8$ -inch faceplate of the target along the short and long elliptical axes of the hole. Both the minimum and maximum shall be expressed as a ratio of the average hot/cold faceplate diameter hole. Such measurements shall be made with a caliper, the arms of which will readily pass through the perforation. Faceplate hole diameter shall be measured to the nearest 0.01 inch.

3.13.3 Faceplate Hole Roundness

The faceplate hole diameter roundness shall be reported as the average maximum faceplate hole diameter divided by the average minimum faceplate hole diameter. This ratio shall be calculated for both hot and cold shots.

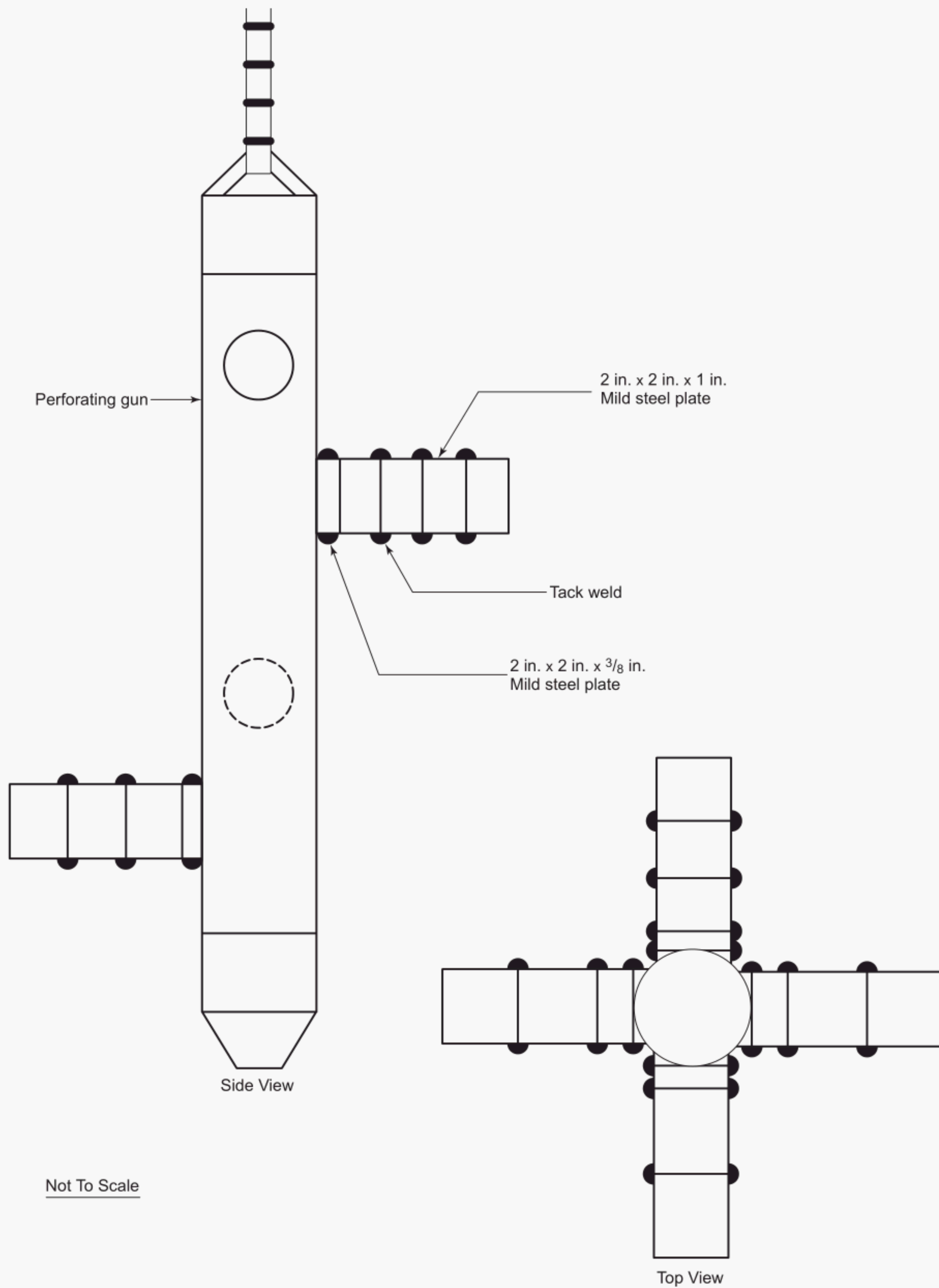


Figure 8—Schematic Illustration of Steel Target for Elevated Temperature Test

3.13.4 Extra Shots

The testing company may test more than the minimum number of charges to obtain a more accurate statistical distribution of test results, but data from all charges tested in any test conducted under API RP 19B, Section 3, shall be reported.

3.14 PRESSURE TESTING OF THE GUN SYSTEM

A separate test shall be made to verify the pressure/temperature/time rating of the gun system. No explosives are required to be in the gun system at this time.

3.14.1 Test Requirements

The test must be made in a suitable pressure vessel with provisions for pressure, temperature, and time chart recorders. Gauges should be calibrated and certified on a regular basis. Materials for the gun system are to satisfy engineering design and quality control specifications as to metallurgy, chemical composition, physical properties, and dimensional properties. Gun body length shall have a minimum unsupported section of eight diameters of nominal outside diameter. If filler bars are used they must have a maximum outside diameter at least 0.25 inch smaller than the inside diameter of the gun. Seal dimensions are to be adjusted to maximum extrusion gap for the test unless all seal configurations represented in the system have been separately and identically qualified.

3.14.2 Minimum Test Conditions

3.14.2.1 Pressure: At the adjusted pressure test value (± 500 psi) (refer to 3.14.3) with a minimum test pressure of 1.05 times the operational pressure rating.

3.14.2.2 Temperature: At the operational temperature rating ($\pm 10^\circ\text{F}$).

3.14.2.3 Duration: One hour at the adjusted pressure test value and operational temperature rating for gun bodies; maximum time rating at adjusted pressure test value and operational temperature for seals.

3.14.3 Determination of Adjusted Pressure Test Value

Compute the collapse of the gun body to be actually tested utilizing those parameters required by recognized engineering practice. Compute the collapse of the gun body at “minimum material conditions” (MMC) utilizing specified physical and dimensional properties. Compute the adjusted test pressure as follows:

$$P_{ATV} = \frac{C_A \times P_r}{C_{MMC}} \quad (3-1)$$

where

P_{ATV} = Calculated adjusted pressure test value to which a specific gun sample is subjected that is equivalent to worst case conditions (minimum material conditions of physical properties, dimensions, and seals), taking into consideration the applicable manufacturing or service company's safety factor, psi.

C_A = Calculated collapse value (or failure) of an actual gun specimen to be evaluated based on its measured (actual) physical properties, dimensions, and seals, psi. (For example, the calculated collapse value for a specific gun specimen may be 24,500 psi, however, this value could drop as low as 21,000 psi under minimum material conditions on other production runs.)

P_r = Operational pressure rating, the maximum to which the gun should be subjected in field service, psi. (This value is related to C_{MMC} by the manufacturing or service company's assigned safety factor. For example, for a gun rated at 20,000 psi, the C_{MMC} is 21,000 psi, providing the safety factor is 1.05.)

C_{MMC} = Calculated collapse value (or failure) of a hypothetical gun sample under worst case conditions or “minimum material conditions” (MMC) of physical properties, dimensions, and seals, as permitted by design specifications and engineering drawings, psi. (If C_{MMC} for a gun sample with lowest permissible tensile strength, minimum permissi-

ble wall thickness, and maximum permissible seal gap is calculated to be 21,000 psi, it has an assigned operational pressure rating (P_r) of 20,000 psi providing the safety factor is 1.05.)

Note: Using the information in the foregoing examples the adjusted pressure test value, PATV, would be calculated as follows:

$$P_{ATV} = \frac{C_A \times P_r}{C_{MMC}}$$

$$P_{ATV} = \frac{24,500 \times 20,000}{21,000} = 23,333 \text{ psi}$$

3.14.4 Alternate Procedure for Verification of Adjusted Pressure Test Value

Where the computed collapse value is deemed not reliable, a gun body or minimum of six expendable charge cases shall be prepared and tested with materials taken uniformly from production run mill stock and verified or prepared to meet minimum physical and dimensional properties. The gun body or expendable charge cases should be verified or prepared to meet minimum material conditions on all dimensions by careful machining with reference to the applicable engineering specifications. Tolerances for minimum material conditions shall be ± 0.001 inch. The gun body or expendable charges shall then be tested at a minimum test pressure of 1.05 times the operational pressure rating.

3.14.5 Disposition of Test Data

Details of test data and corresponding specifications and quality control documentation should be retained by the manufacturer as long as the subject equipment is in field service.

4 Evaluation of Perforation Flow Performance Under Simulated Downhole Conditions (See Also Appendices A, B, and C).

4.1 INTRODUCTION

The purpose of these test procedures is to provide a measure of flow performance of a perforation. The general procedure may be used on quarry rack or well core under conditions chosen to simulate site-specific downhole conditions. A set of standard test conditions is also provided. This is intended as a procedure to be followed for a special test.

4.2 TEST TARGET

Tests will be performed in cylindrical cores provided with a faceplate simulating well casing, a flexible jacket to transmit simulated overburden stress to the sample, and provision for applying pore fluid pressure to the boundaries of the sample. Pore fluid pressure may be applied to the cylindrical sides of the sample (radial flow), to the unperforated end of the sample (axial-flow), or both, in a manner simulating in situ pore pressure fields. Typical arrangements are shown in Appendix A, Figures A.1 and A.2. The specific target geometry will be at the option of the testing company except for the following:

- Target diameter shall not be less than four inches.
- The entrance hole shall be positioned in the center of the faceplate and, after shooting, the tip of the perforation shall not be further than one-fourth of the target diameter from the axis of the target.
- After shooting, there shall be a minimum distance equal to one target diameter between the farthest end of the perforation and the rear of the target.
- Only samples oriented with axes parallel to bedding planes should be used in axial-flow geometry.
- Simulated overburden stresses shall be applied uniformly to all portions of the sample, although axial and radial stress may be different, if desired.
- The target geometry used shall be tested to assure that no flow bypasses the perforation.

4.3 TESTING EQUIPMENT

Equipment shall consist of a pressure vessel (the confining pressure vessel) for applying confining pressure to the sample, a second pressure vessel (the simulated wellbore) to contain and apply wellbore pressure to the perforating gun, and a flow system for

applying pore pressure to the sample. A schematic drawing is shown in Appendix A, Figure A.3. The specific arrangements are at the discretion of the testing company except for the following:

- a. The inner diameter of the confining pressure vessel shall be at least 12 inches, or it shall be demonstrated that penetration and flow are the same as would be the case in such a vessel.
- b. The simulated wellbore vessel shall be equipped with an accumulator or other pressure ballast of at least one gallon capacity precharged to one-half the intended wellbore pressure, and connected to the wellbore through tubing with at least $1/4$ -inch inside diameter.
- c. The pore pressure system shall be capable of providing the pressure needed for both initial pressurization and post-shot flow, shall be free of pressure pulsations at the sample, and shall be equipped with a filter on the sample inlet which will eliminate all particles of 3-micron diameter or larger.
- d. Transducers, gauges, or other means of suitable accuracy shall be provided to measure confining pressure, wellbore pressure, pore pressure, fluid inlet temperature, and flow rate through the sample.
- e. The temperature of the fluid used should be measured as it enters the sample.

4.4 CHARGE SELECTION AND AGING

Where possible, the charges shall be samples taken uniformly from a minimum production run of 1,000 for RDX or PETN charges, or of 300 charges for charges using high temperature explosives, and packaged in the manufacturing/service company's standard shipping containers. These charges shall be stored for a minimum of four weeks prior to testing to allow some aging to occur.

4.5 GUN CONFIGURATION

Single shot charge carriers, if needed, shall be fabricated such that internal standoff and gun wall (or port plug) thickness and material are the same as in production run gun stock.

4.6 SYSTEMS CALIBRATION

4.6.1 All transducers and gauges will be calibrated against a suitable reference standard at intervals not exceeding six months. Most recent calibration data shall be kept on file.

4.6.2 Pressure drop due to system impedance and turbulence will be measured as a function of flow rate using a high permeability dummy sample such as 20/40 resin-bonded sand. This test shall be performed at least once per year for both perforation and permeability test fixtures. Most recent data shall be kept on file.

4.7 PERMEABILITY MEASUREMENT

Suitable measurements of permeability shall be made on each test sample prior to perforating. Permeability shall be measured on the whole sample both parallel ($K_{//}$) and perpendicular (K_{\perp}) to bedding planes using methods described in Appendix B. The values of K_{\perp} and $K_{//}$ will be used to calculate expected flow into the perforation in Appendix C.

For samples with axes perpendicular to bedding, axial flow (Appendix B, section B.1) is used to measure permeability perpendicular to bedding, and flow across the diameter (Appendix B, section B.2) is used for parallel permeability. For samples oriented parallel to bedding, the reverse of the above techniques are used. In the latter case, the flowing segments of the cross-diameter method (Appendix B, section B.2) are oriented to obtain flow perpendicular to bedding. The detailed techniques used are at the discretion of the testing company except for the following:

- a. The measurement should be performed under the same effective stress as that used during the perforation test.
- b. The core should be at the same fluid saturation condition as that used during the perforation test, and the same fluid and range of flow rates should be used in both tests during the flow measurements.
- c. The same flow system constraints apply as described in 4.6.2.

4.8 TESTING PROCEDURE

The prepared sample shall be assembled with faceplate, flexible jacket, and flow distributor and mounted in the pressure vessel. The armed gun to be tested shall be connected to shooting leads and placed in the wellbore vessel following standard safety procedures. Confining, pore, and wellbore pressures shall be brought simultaneously to the desired levels and the shot fired. If

desired, the equalized wellbore/pore pressures may be slowly reduced to ambient while simultaneously lowering confining pressure to keep the effective pressure (i.e., confining pressure minus pore pressure) constant.

Flow shall be initiated through the sample by applying pore pressure to the sample to simulate the desired draw down. (Note: This value will depend on the flow geometry chosen and effective permeability of the perforated sample.) Flow at least 10 liters at this pressure or until no further change in flow rate occurs, whichever is longer. Additional flow testing, or further testing at other pressures, is at the discretion of the testing company.

4.9 DATA RECORDING

For each sample tested, the following data shall be recorded if appropriate:

- a. A line drawing of the specific test geometry and flow boundary conditions used shall be attached.
- b. Sample source, diameter, length, orientation, and fluid saturation condition.
- c. Sample permeabilities and method of measurement. (Refer to Appendix B.)
- d. Test conditions during both shooting and flowing.
- e. Perforation geometry including the following:
 1. Debris-free Depth. Measured distance from rock face to first debris in the hole, as measured with a blunt probe.
 2. Total Core Penetration. Distance from rock face to deepest effect of penetration. Determine by probing for weakened rock beyond the perforation tip.
 3. Perforation Diameter Profile. The diameter of the perforation shall be provided at 1-inch intervals along the length of the perforation. This may be done by recording the diameter in tabular form, by sketching the perforation on an appropriate grid, or by attaching a photograph of the perforation, again with an appropriate scale grid. The average perforation diameter will be recorded to the nearest 0.1 inch.
- f. Differential pressure (corrected for flow system impedance as in 4.6.2) and flow rate at one-liter intervals; differential pressure and flow rate used in calculations maximum flow rate, differential pressure, and cumulative flow prior to taking data used in calculations.
- g. Inlet temperature of fluid used and corresponding viscosity.

Note: Flow that may enter the debris-free portion of the perforation through the debris should be eliminated or subtracted from the total flow by making and recording a supplementary measurement.

4.10 DATA REDUCTION

Flow rate data will be presented by comparing the maximum observed flow rate to that expected from pro shot permeability measurement. Core Flow Efficiency (CFE) shall be defined as the ratio, observed flow/calculated flow, normalized to a target with a radius of 3.5 inches. Suitable means will be used to calculate expected flow based on measured debris free perforation depth, average perforation diameter, initial permeability, and applied pressure boundary conditions.

Equations are supplied in Appendix C to assist in this calculation for radial flow boundary conditions. In this case, *CFE* is defined as:

$$CFE = \frac{1.25 - \ln(r)}{1.25 - \ln(r) + \ln\left(\frac{R}{r}\right)\left(\frac{Q_c}{Q_m} - 1\right)} \quad (4-1)$$

where

r = average perforation radius, in.,

R = sample radius, in.,

Q_c = calculated flow from Appendix C, section C.2, cm³/sec.,

Q_m = measured flow rate, cm³/sec.

For use in well productivity models, the permeability of a hypothetical, reduced-permeability zone surrounding the perforation can be estimated by multiplying the matrix permeability used in the model by the Permeability Reduction Factor (PRF):

$$PRF = \frac{CFE \times \ln\left(\frac{r_c}{r}\right)}{1.25 \times (1 - CFE) - \ln(r) + (CFE) \times \ln(r_c)} \quad (4-2)$$

The value of the damaged zone radius, r_c , must be chosen, for example, by selecting the thickness of the zone.

4.11 STANDARD TEST CONDITIONS

The following additional specifications are provided so that data can be collected and compared under common conditions. All specifications above apply. Data collected under these conditions may not represent and may not be translatable to downhole conditions. Permeability damage caused by the perforator may be different in actual reservoir rock and under actual downhole pressures. Post-shot clean up may differ from standard test results depending on actual reservoir rock properties, the underbalance used, dynamic wellbore storage effects, production drawdown, fluid composition and viscosity, perforating phasing and shot density, and other factors. For best site-specific results, the general test specifications above allow simulation of each of these factors.

4.11.1 Rock Samples

Test samples shall be of Berea sandstone, meeting specifications of Section 2 and having absolute permeability to brine (parallel to bedding) between 100 and 400 md. Sample diameter shall be four inches (± 0.25 inch) for charges ≤ 15 g explosive weight and 7 inches (± 0.25 inch) for larger charges. Tests may be done using samples cut either parallel or perpendicular to bedding planes.

4.11.2 Pore Pressure Boundaries

Pore pressure shall be applied to the cylindrical sides of the sample only, as shown in Appendix A, section A.3.

4.11.3 Pore Fluid

Sodium chloride brine solution (3% by weight).

4.11.4 Pressure Conditions

Applied pressures when the gun is fired shall be as follows:

Confining Pressure 4,500 psi

Pore Pressure 1,500 psi

Wellbore Pressure 1,000 psi

This provides an effective rock stress of 3,000 psi and 500 psi underbalance. Flow testing may be done with wellbore and pore pressure ambient, but effective stress shall be kept at 3,000 psi by simultaneously lowering confining pressure (refer to 4.8).

4.11.5 Differential Pressure

This pressure during flow shall be 50 psi.

4.11.6 Penetration

The faceplate shall be designed so that the perforator must penetrate $\frac{3}{8}$ -inch of ASTM A 36 steel or equivalent and $\frac{3}{4}$ -inch of Hydrostone[®] or equivalent before entering the target.

4.11.7 Clearance

With the exception of zero-phased perforators used with eccentricing devices, bullet and jet perforators shall be tested at a clearance of $\frac{1}{2}$ inch. Zero-phased perforators used with eccentricing devices shall be fired at the clearance assumed in a well.

5 Debris Collection Procedure for Perforating Guns

5.1 HOLLOW CARRIER PERFORATING GUNS

Because of the complexity and variability of well conditions it is thought to be impossible to determine with any degree of accuracy, the amount of perforating debris that will be left in a well bore by conducting a surface test. Since a down hole test is neither practical nor affordable it was necessary to design a surface test whereby potential gun debris could be quantified specifically for the purpose of comparing competing systems. This procedure does not address casing scale or debris from any other source but the perforating gun.

Debris is defined as all solid materials that are blown out of the exit holes in the gun at the time of detonation, or fall out of the exit holes during the trip out of the well.

This test was designed to quantify the debris that comes out of a perforating gun upon detonation, and also identify and quantify any debris remaining in the gun that is small enough to potentially come out of the gun on the trip out of the well. It is designed for comparative purposes only and should not be used to determine the amount of debris that will be left in any given well bore.

The following requirements must be met to properly conduct this test:

1. Standard field equipment available to any customer must be used.
2. The gun assembly must have a minimum of 2.5 continuous linear feet of perforations.
3. The entire gun must be fully loaded to the maximum shot density.
4. With exception of the bottom sub/plug, which must be solid or blanked off, the gun assembly shall consist of standard field equipment and other parts as specified in 1.3.
5. The test must be conducted with the gun inside a water filled casing, and positioned the same as a standard API Section 1 test.
6. This test can be done concurrently with a standard API Section 1 test if the gun has the required 2.5 linear feet of perforated zone, and is fully loaded. Otherwise the test must be conducted separately using a water filled casing backed with water or concrete.
7. The casing size, weight, and grade, must meet the requirements of Table 2, and must be the same size that would normally be used in a Section 1 test for that system.
8. The charges used must be standard and come from a single production lot of not less than 300 each for HMX and higher temperature charges, and not less than 1,000 each for lower temperature charges, as defined in 1.4.
9. The gun must be restrained to stay inside the casing and in a vertical position after the detonation.

Phase I of the procedures below addresses the debris that is blown out of the gun at the time of detonation. Phase II addresses debris that is small enough to come out of the exit holes but remains in the gun after detonation. Use the guidelines below to measure and record the test data:

1. All final weights and volumes in Phase I and II must be calculated and presented as amounts per linear feet of perforations.
2. The calculations must be based upon a fully loaded interval, and not include lengths for tandems or other non perforated lengths. Example: A 4-foot long gun may only contain 2.5 feet of perforations.
3. All measuring equipment must be properly calibrated.

5.2 PHASE I

The objective of this phase is to determine the amount of solid debris loss at the time of detonation. This is done by measuring the amount of weight loss achieved upon detonation from solid materials that are not consumed in the detonation process. The following steps comprise Phase I.

5.2.1 Gross Pre-Test Weight of Loaded Gun Assembly

Weigh the loaded gun assembly including all explosives and record this weight in kilograms to the nearest 10 grams.

5.2.2 Total Weight of all Solid Materials Consumed in the Detonation

Calculate the total weight of all materials that will be consumed during the detonation. This should include the following:

1. Total calculated weight of all explosives in the charges based on design data
2. Total actual weight of all detonating cord including the sheath
3. Total calculated weight of all charge liners based on design data or actual weight
4. Total actual weight of any other solid materials inside the gun that are consumed upon detonation.
5. If applicable See 5.4 to determine amount of charge case debris consumed in the detonation

Add the weights of all above items and record to the nearest one gram.

5.2.3 Net Pre-Test Weight of Loaded Gun Assembly

Subtract the total weight of all consumables from the gross pre-test weight and record in kilograms to the nearest 10 grams.

5.2.4 Shooting Procedure

Place the gun in the water filled casing in the same position it would be in for an API Section 1 test. Restrain the gun to keep it in the target and shoot it. Then carefully remove it from the target and transport it to the drying area in a manner that retains the remaining debris inside the gun.

5.2.5 Dry Weight of Expended Gun Assembly

This weight should be taken only after the expended gun assembly has gone through the drying procedure. The procedure consists of the gun being placed in an oven in a horizontal position with all the ports open, at a temperature of between 150 and 200°F for a minimum of 12 hours. The temperature used must not exceed the time and temperature rating of any potentially un-detonated explosive. Record the dry weight in kilograms to the nearest 10 grams.

5.2.6 Total Weight of Debris Lost at Time of Detonation

Subtract the dry weight of the expended gun assembly from the net pre test weight of the loaded gun assembly and record this to the nearest one gram.

Note: If the number calculated is less than zero, then record as zero.

5.2.7 Weight of Debris Lost per Linear Foot of Perforations at Time of Detonation

Divide the total weight of solid debris lost at time of detonation by total number of charges, and multiply by the number of shots per foot. Record this to the nearest one gram.

5.2.8 Volume of Debris Lost Per Linear Foot of Perforations at Time of Detonation

Divide the total weight of debris lost upon detonation per linear foot of perforations by the average gram weight per cc determined in 5.3.5 of Phase II, and record to the nearest cubic centimeter.

5.3 PHASE II

The objective of this phase is to determine weight, volume, sieve size, and type of material, of all solid debris that is small enough to pass through the exit holes in the gun. It is designed to provide the weight and volume of debris in a worst case condition by rolling the gun in a horizontal position and collecting all the debris.

All debris that falls out of the gun during transportation from the target, to the drying area, to the weighing scales, and to the rolling station, must be included in the total for debris that rolls out of the gun.

5.3.1 Total Weight of Debris Rolled From The Gun

Place the fully dry expended gun in a horizontal position (level within $\frac{1}{4}$ inch) on two sets of rollers over a smooth surface. The gun must clear the surface at least three inches. Rotation speed must be constant and between 10 and 30 RPM. Roll the gun a total of 100 revolutions. Weigh all the debris retrieved and record to the nearest gram.

5.3.2 Weight of Debris Rolled from the Gun per Linear Foot of Perforations

Divide the total weight of debris rolled from the gun by the total number of charges, then multiply by the number of shots per foot and record this to the nearest gram.

5.3.3 Total Volume of Debris Rolled From the Gun

Use an appropriately sized graduated measuring cylinder to determine the volume of debris rolled from the gun. The graduated cylinder must meet ASTM E 1272 (Standard Specification for Laboratory Glass Graduated Cylinders) requirements for accuracy. The graduated cylinder may be tapped lightly until a constant volume is achieved. On guns with a high volume of debris add the total of all measurements and record to the nearest cubic centimeter.

5.3.4 Volume of Debris Rolled From Gun Per Linear Foot of Perforations

Divide the total volume of debris rolled from the gun by the number of charges, and multiply by the number of charges per foot. Record this volume to the nearest cubic centimeter.

5.3.5 Average Weight of Gun Debris Per cc

Divide the total gram weight of debris per linear foot rolled from the gun by the total ccs per linear foot rolled from the gun and record to the nearest 0.1 gm/cc.

5.3.6 Total Weight and Volume of Debris Lost per Linear Foot at Time of Detonation and Rolling Procedure

To make the volume calculation you have to assume that the debris blown from the gun during detonation is the same sieve size and density as the debris rolled from the gun.

5.3.7 Total Volume of Debris Lost Per Linear Foot of Perforations

Add the volume of debris per linear foot lost upon detonation to the volume of debris per linear foot rolled from the gun and record to the nearest cubic centimeter.

5.3.8 Total Weight of Debris Lost Per Linear Foot of Perforations

Add the weight of debris per linear foot lost upon detonation to the weight of debris per linear foot rolled from the gun and record to the nearest gram.

5.3.9 Debris Sieve Size Description

Determine sieve size by measuring and recording all debris rolled from the gun per ASTM E 389-03 (Standard Test Method for Particle Size or Screen Analysis at No.4 Sieve and Coarser, for Metal-Bearing Ores and Related Materials. Record the % by weight retained on each of the U.S. Sieves listed on the data sheet (see Figure 9). Also identify the type of material retained on each sieve.

5.3.10 Average Gun Exit Hole Size

Measure the exit hole sizes in the gun by measuring along the short and long elliptical axis from the outside of the gun. Use a caliper whose arms readily pass through the opening. The short axis shall be the smallest through-hole diameter measured. Record the average exit hole size to the nearest 0.01 inch.

5.3.11 Data Reporting

Use the "Gun Debris Data Sheet for Hollow Carrier Perforating Systems" as the standard reporting form. See Figure 9.

5.4 CHARGE CASE DEBRIS PROCEDURE

This procedure can be used to determine the amount of charge case material consumed during detonation. The results should only be recorded if the material for the charge case is consumable or partially consumable.

GUN DEBRIS DATA SHEET FOR HOLLOW CARRIER PERFORATING SYSTEMS, PER API RP 19B SECTION 5

Page 1 of 1

| <u>Hardware Description</u> | | | | <u>Charge Description</u> | |
|---|------------|-------------------------|-------------------------|--|-------|
| Service Company _____ | | | | Charge Name _____ | |
| Gun OD & Trade Name _____ | | | | Charge Part No. _____ | |
| Gun Type _____ | | Gun Assy Part No. _____ | | Explosive Type _____ Grams per Chg _____ | |
| Shots per Foot _____ | | Phasing _____ | | Total Chgs Tested _____ Case Mat. _____ | |
| Total Shot Positions in Gun _____ | | | | | |
| Test Configuration: Casing O.D. _____ in. Casing wt. per Foot _____ lbs. | | | | | |
| Debris Quantities and Description | | | | | |
| 5.2.3 - Net Pre Test Weight of Loaded Gun Assembly (less explosives and any other consumables) _____ | | | | | kg |
| 5.2.5 - Dry Weight of Expended Gun Assembly (before rolling procedure) _____ | | | | | kg |
| 5.2.7 - Weight of Debris Lost per Linear Foot of Perforations at Time of Detonation _____ | | | | | gm |
| 5.2.8 - Volume of Debris Lost per Linear Foot of Perforations at Time of Detonation _____ | | | | | cc |
| 5.3.2 - Weight of Debris Rolled From Gun per Linear Foot of Perforations (after 100 revolutions) _____ | | | | | gm |
| 5.3.4 - Volume of Debris Rolled From Gun per Linear Foot of Perforations (after 100 revolutions) _____ | | | | | cc |
| 5.3.5 - Average weight of gun debris per cc _____ | | | | | gm/cc |
| 5.3.7 - Total Volume of Debris Lost per Linear Foot of Perforations _____ | | | | | cc |
| 5.3.8 - Total Weight of Debris Lost per Linear Foot of Perforations _____ | | | | | gm |
| 5.3.9 - | <u>No.</u> | <u>U S Sieve Size</u> | <u>% by Wt.Retained</u> | <u>Debris Description Including Type of Material</u> | |
| | 1 | 12.70 mm (.500 in.) | _____ | _____ | |
| | 2 | 9.53 mm (.375 in.) | _____ | _____ | |
| | 3 | 6.35 mm (.250 in.) | _____ | _____ | |
| | 4 | 4.75 mm (.187 in.) # 4 | _____ | _____ | |
| | 5 | 2.36 mm (.094 in.) # 8 | _____ | _____ | |
| | 6 | Through # 8 sieve | _____ | _____ | |
| 5.3.10 - Avg Exit Hole Size in Gun in. Test Date | | | | | |
| Remarks: _____ | | | | | |
| MANUFACTURER'S CERTIFICATION | | | | | |
| <p>I certify that these tests were made according to the procedures as outlined in API RP 19B: Recommended Practices for Evaluation of Well Perforators, Second Edition, September 2006. All of the equipment used in these tests, such as the guns, jet charges detonator cord, etc., was standard equipment with our company for the use in the gun being tested and was not changed in any manner other than what is specified in Section 5. Furthermore, the equipment was chosen at random from stock and therefore will be substantially the same as the equipment, which would be furnished to perforate a well for any operator. This test is designed for comparative purposes only, and should not be used to determine the amount of debris that will be left in any given well bore. API neither endorses these test results nor recommends the use of the perforator system described.</p> | | | | | |
| COMPANY _____ ADDRESS: _____ | | | | | |
| CERTIFIED BY: _____ | | | | | |
| RECERTIFIED BY: _____ Company Official _____ Title _____ Date _____ | | | | | |

Figure 9—Gun Debris Data Sheet for Hollow Carrier Perforating Systems

The charges used for this procedure must be from the same production lot as those used for the gun debris test. Charge case debris must be collected by shooting a standard charge inside a closed and sealed fixture. A steel target should be used to catch the jet.

5.4.1 Gross Pre-Test Weight of Test Assembly

Weigh the charge and test assembly. This includes the steel target and all explosives, but not the containment vessel. Record this weight to the nearest one gram.

5.4.2 Gross Pre-Test Weight of Containment Vessel and Test Assembly

Weigh the closed and sealed containment vessel including the charge test assembly and record this weight to the nearest one gram.

5.4.3 Total Weight of Solid Materials Known to be Consumed in the Detonation

Weigh and calculate the following items to the nearest gram.

1. Total calculated weight of all explosives in the charges based on design data.
2. Total actual weight of all detonating cord including the sheath.
3. Total calculated weight of all explosives in the initiators based on design data.

5.4.4 Net Pre-Test Weight of Containment Vessel and Test Assembly

Subtract the total weight of all consumables from the “Gross Pre-Test Weight of Containment Vessel and Test Assembly”. Record this weight to the nearest one gram.

5.4.5 Shooting Procedure

Restrain the charge to keep it in the fixture and shoot it.

5.4.6 Total Post-Test Weight of Unconsumed Materials

Weigh the containment vessel and test assembly after any internal pressure has been relieved, and record to the nearest 1 gram.

5.4.7 Determine the Percentage of Consumed Materials Other than Explosives

Subtract the “Total Post-Test Weight of Unconsumed Materials”, from the “Net Pre-Test Weight of Containment Vessel and Test Assembly.” If the difference is less than 5% the case material is not considered consumable. If the difference is greater than 5% go on to 5.4.8 and determine the amount of case debris consumed in the detonation.

5.4.8 Post-Test Weight of Test Assembly

Open the containment vessel and retrieve all solid debris and test assembly components. Weigh all of the test assembly components and debris, and record this to the nearest 1 gram.

5.4.9 Net Pre-Test Weight of Test Assembly

Determine this by subtracting the “Total Weight of Solid Materials Known to be Consumed in the Detonation” from the “Gross Pre-Test Weight of Test Assembly”.

5.4.10 Weight of Case Material Consumed in the Detonation

This can now be determined by subtracting the “Post-Test Weight of Test Assembly” from the “Net Pre-Test Weight of Test Assembly”.

Repeat this test 3 times and record the average weight of the consumed case material to the nearest 0.1 gram. Multiply this by the number of charges in the gun debris test and record to the nearest one gram in Phase I, 5.2.2 “Total Weight of Charge Case Material Consumed in the Detonation”.

5.5 PERFORATING SYSTEMS WITH CAPSULE CHARGES

This procedure is designed to identify and quantify all debris left in the well bore by a capsule gun system. Since the well bore environment greatly affects the size of the debris, it is important to run all tests under the same conditions.

Debris is described as all solid material from the perforating gun that remains in the well bore after the expended gun system is retrieved.

5.5.1 Test Requirements

The following requirements must be met to properly conduct this test:

1. Standard field equipment available to any customer must be used.
2. The gun assembly must have a minimum of one linear foot of perforations.
3. The linear gun section must be fully loaded to the maximum shot density.
4. The assembled gun section can be cut from a standard length strip, but must include all accessories and perforating hardware that would be used in a standard API Section 1 test.
5. If different hardware is used to attach charges in different shot phasings, then each of these must be tested and reported separately.
6. The test must be conducted in a closed vessel under 5,000 psi water (potable water) pressure at ambient temperature.
7. With the exception of the perforations, the chamber must remain sealed after the gun section has been fired. If the vessel ruptures the test is considered to be invalid.
8. The charges used must be standard and come from a single production lot of not less than 300 each for HMX and higher temperature charges, and not less than 1,000 each for lower temperature charges, as defined in 1.4.

5.5.2 Test Procedure

Follow the steps below to conduct the debris test:

1. Place the loaded gun section in the pressure vessel in the same position it would be in if it were being fired in a standard API Section 1 target.
2. Close the vessel and pressurize to 5,000 psi
3. Fire the gun section. If it is necessary to transport the pressure vessel to another area to open it, it must be done in a manner to contain all the debris.
4. Open the vessel and retrieve all the solid debris.
5. Remove and discard all the retrievable carrier material.
6. Detonator wires and fragments, and detonating cord remnants that are common to all systems can also be removed.
7. Thoroughly dry the remaining debris at 150 to 200°F for a minimum of 1 hour before weighing and measuring.
8. All measuring and weighing equipment must be properly calibrated.

5.5.3 Debris Volume Measurements

Use the guidelines below to measure and record the test data to the nearest cc:

1. Use an appropriately sized graduated measuring cylinder to determine the volume of debris.
2. The graduated cylinder must meet ASTM E 1272 (Standard Specification for Laboratory Glass Graduated Cylinders) requirements for accuracy.
3. The graduated cylinder may be tapped lightly until a constant volume is achieved.
4. The volume must be reported as the total amount per charge and the total amount per linear foot of perforations.

5.5.4 Debris Weight Measurements

Use any standard scale with the capability to measure to the nearest gram. Weigh and record the amount per charge and the total amount per linear foot, on the data sheet (see Figure 10) to the nearest gram.

5.5.5 Average Weight of Gun Debris Per cc

Divide the total gram weight of debris by the total cc and record on the data sheet (see Figure 10) to the nearest 0.1 gram per cc.

5.5.6 Debris Sieve Size Analysis

Determine sieve size by measuring and recording all solid debris generated by the expended gun section. Measurements should be made according to ASTM E 389-03 (Standard Test Method for Particle Size or Screen Analysis at No.4 Sieve and Coarser, for Metal-Bearing Ores and Related Materials). Record the percentage by weight retained on each of the U.S. Sieves listed on the data sheet (see Figure 10). Also identify the type of material retained on each sieve.

5.5.7 Data Reporting

Use the “Gun Debris Data Sheet for Capsule Charge Perforating Systems” as the standard reporting form. See Figure 10.

6 REFERENCES

1. API RP 56 Second Edition
2. ASTM C 109
3. ASTM A 36

GUN DEBRIS DATA SHEET FOR CAPSULE CHARGE PERFORATING SYSTEMS, PER API RP 19B SECTION 5

Page 1 of 1

| Hardware Description | | | | Charge Description | |
|--|------------|------------------------------------|--------------------------|--|--|
| Service Company _____ | | | | Charge Name _____ | |
| Gun Size & Trade Name _____ | | | | Charge Part No. _____ | |
| Gun Type _____ | | Gun Assy Part No. _____ | | Explosive Type _____ Grams per Chg _____ | |
| Gun Material _____ | | Shots per Foot _____ Phasing _____ | | Case Material _____ Total Chgs. _____ | |
| Test Configuration: I.D of Pressure Vessel _____ inches | | | | Testing Pressure - 5,000 psi water | |
| | | | | Testing Temp - Ambient | |
| Total Weight and Volume of Debris Created per Charge and per Linear Foot of Perforations | | | | | |
| 5.5.3 - Volume of Debris measured to the nearest cc ----- cc per charge _____ cc per linear ft. of perforations | | | | | |
| 5.5.4 - Weight of Debris measured to the nearest gm. ----- gm per charge _____ gm per linear ft. of perforations | | | | | |
| 5.5.5 - Average Weight of Gun Debris per cc, measured to the nearest 0.1 gm. ----- gm/cc | | | | | |
| 5.5.6 - | <u>No.</u> | <u>U S Sieve Size</u> | <u>% by Wt. Retained</u> | <u>Debris Description Including Type of Material</u> | |
| | 1 | 38.10 mm (1.500 in.) | _____ | _____ | |
| | 2 | 25.40 mm (1.000 in.) | _____ | _____ | |
| | 3 | 19.05 mm (.750 in.) | _____ | _____ | |
| | 4 | 12.70 mm (.500 in.) | _____ | _____ | |
| | 5 | 9.53 mm (.375 in.) | _____ | _____ | |
| | 6 | 6.35 mm (.250 in.) | _____ | _____ | |
| | 7 | 4.75 mm (.187 in.) # 4 | _____ | _____ | |
| | 8 | 2.36 mm (.094 in.) # 8 | _____ | _____ | |
| | 9 | Through # 8 Sieve | _____ | _____ | |
| | | | | | Test Date <div style="border: 1px solid black; width: 60px; height: 20px; margin: 0 auto;"></div> |
| Remarks: _____ | | | | | |
| MANUFACTURER'S CERTIFICATION | | | | | |
| <p>I certify that these tests were made according to the procedures as outlined in API RP 19B: Recommended Practices for Evaluation of Well Perforators, Second Edition, September 2006. All of the equipment used in these tests, such as the guns, jet charges detonator cord, etc., was standard equipment with our company for the use in the gun being tested and was not changed in any manner other than what is specified in Section 5. Furthermore, the equipment was chosen at random from stock and therefore will be substantially the same as the equipment, which would be furnished to perforate a well for any operator. This test is designed for comparative purposes only, and should not be used to determine the amount of debris that will be left in any given well bore. API neither endorses these tests results nor recommends the use of the perforator system described.</p> | | | | | |
| COMPANY: _____ | | | ADDRESS: _____ | | |
| CERTIFIED BY: _____ | | | _____ | | |
| RECERTIFIED BY: _____ | | Company Official | | Title | Date |

Figure 10—Gun Debris Data Sheet for Capsule Charge Perforating Systems

APPENDIX A—TEST TARGET AND EQUIPMENT—SECTION 4 TESTING

A.1 Introduction

Within the test target specification (refer to 4.2) pressure can be applied to the cylindrical sides of the sample, to its ends, or both, depending on the anticipated pore pressure field in situ. The following illustrates methods for achieving these boundary conditions.

A.2 Radial Flow

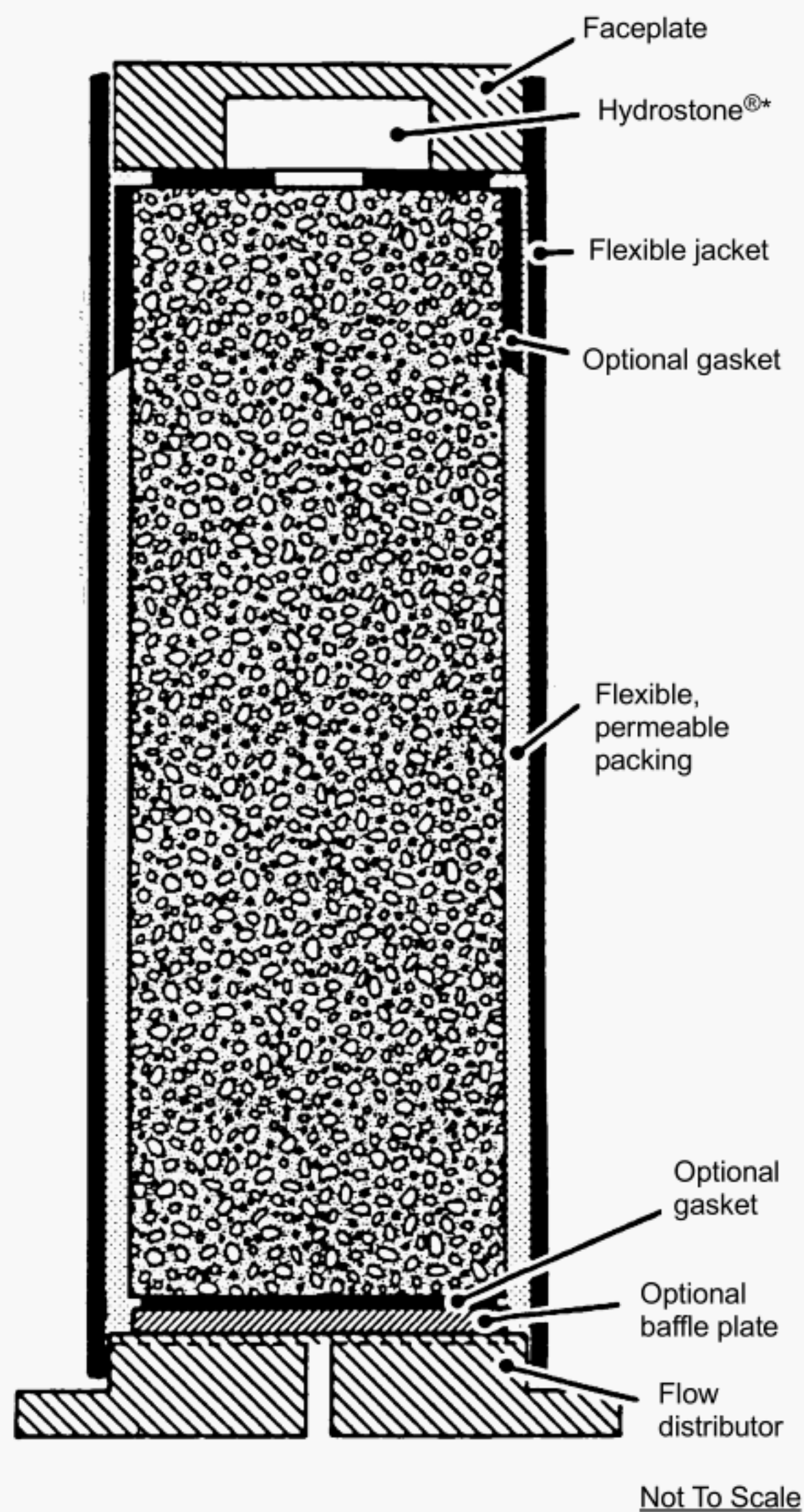
Pore pressure is applied to the cylindrical sides of the target. The gap between jacket and sample (refer to Figure A.1) is filled with a flexible material with at least 2 darcies permeability. Bauxite proppant (20/40 mesh) or $\frac{1}{2}$ inch diameter metal rods have been successfully used. A gasket with central hole between the faceplate and sample prevents bypass of fluid. An optional gasket and baffle plate at the rear of the sample prevents flow into the end of the sample as required in 4.11.2. Flow may also be blocked from a portion of the target nearest the entrance hole to roughly “simulate” drilling damage. The entire assembly is placed in the confining pressure vessel and pressurized.

A.3 Axial Flow

Pore pressure is applied to the unperforated end of the sample only. The bottom end cap (refer to Figure A.2) distributes fluid across the end of the sample through a system of grooves and steel screen. The entire assembly is placed in the confining pressure vessel and pressurized.

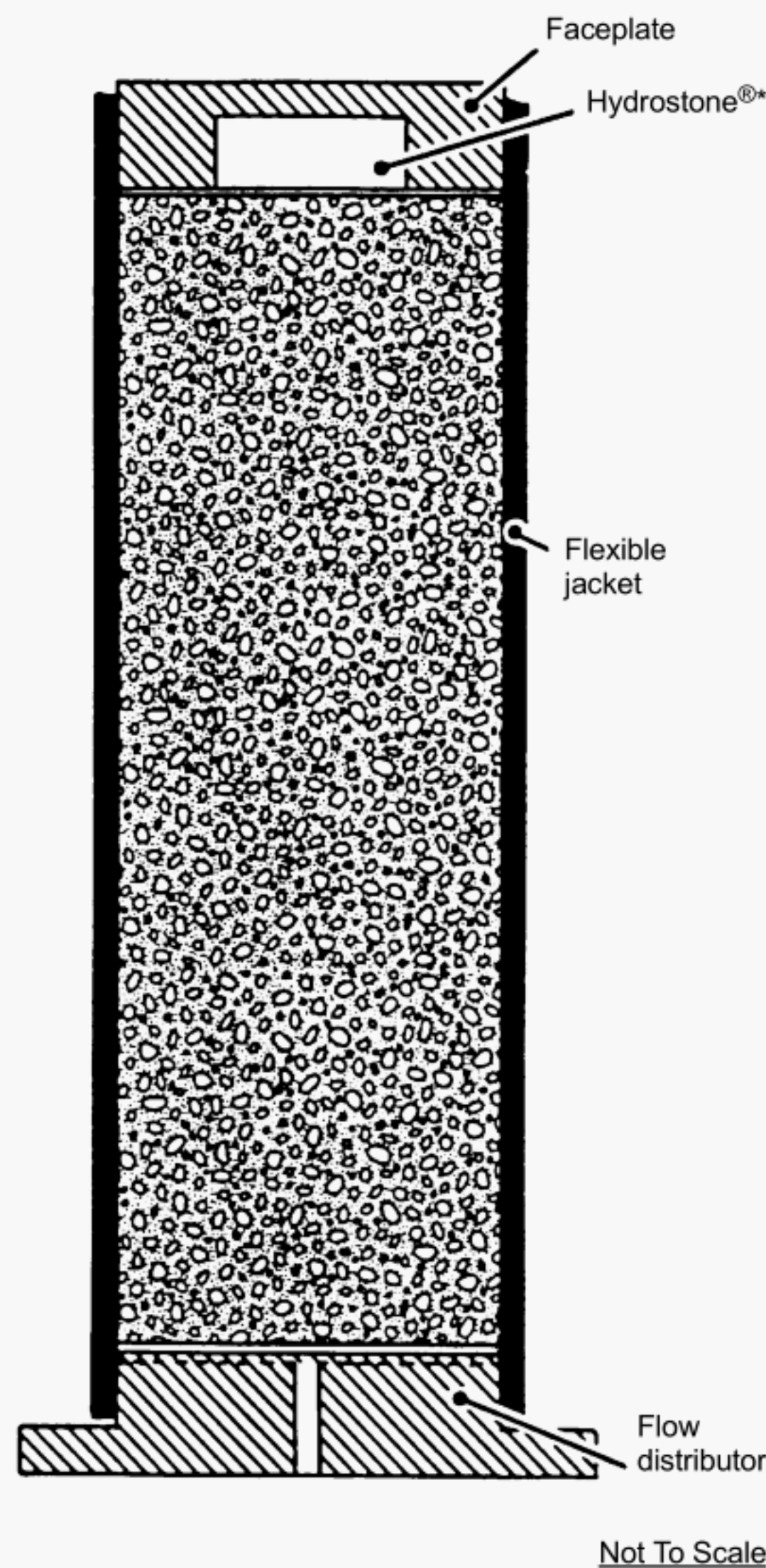
A.4 Test Equipment

Figure A.3 shows a schematic of typical testing equipment.



*Trade name of U.S. Gypsum Co., Chicago, IL. This term is used as an example only, and does not constitute an endorsement of this product by API.

Figure A.1—Typical Radial-Flow Geometry



*Trade name of U.S. Gypsum Co., Chicago, IL. This term is used as an example only, and does not constitute an endorsement of this product by API.

Figure A.2—Typical Axial-Flow Geometry

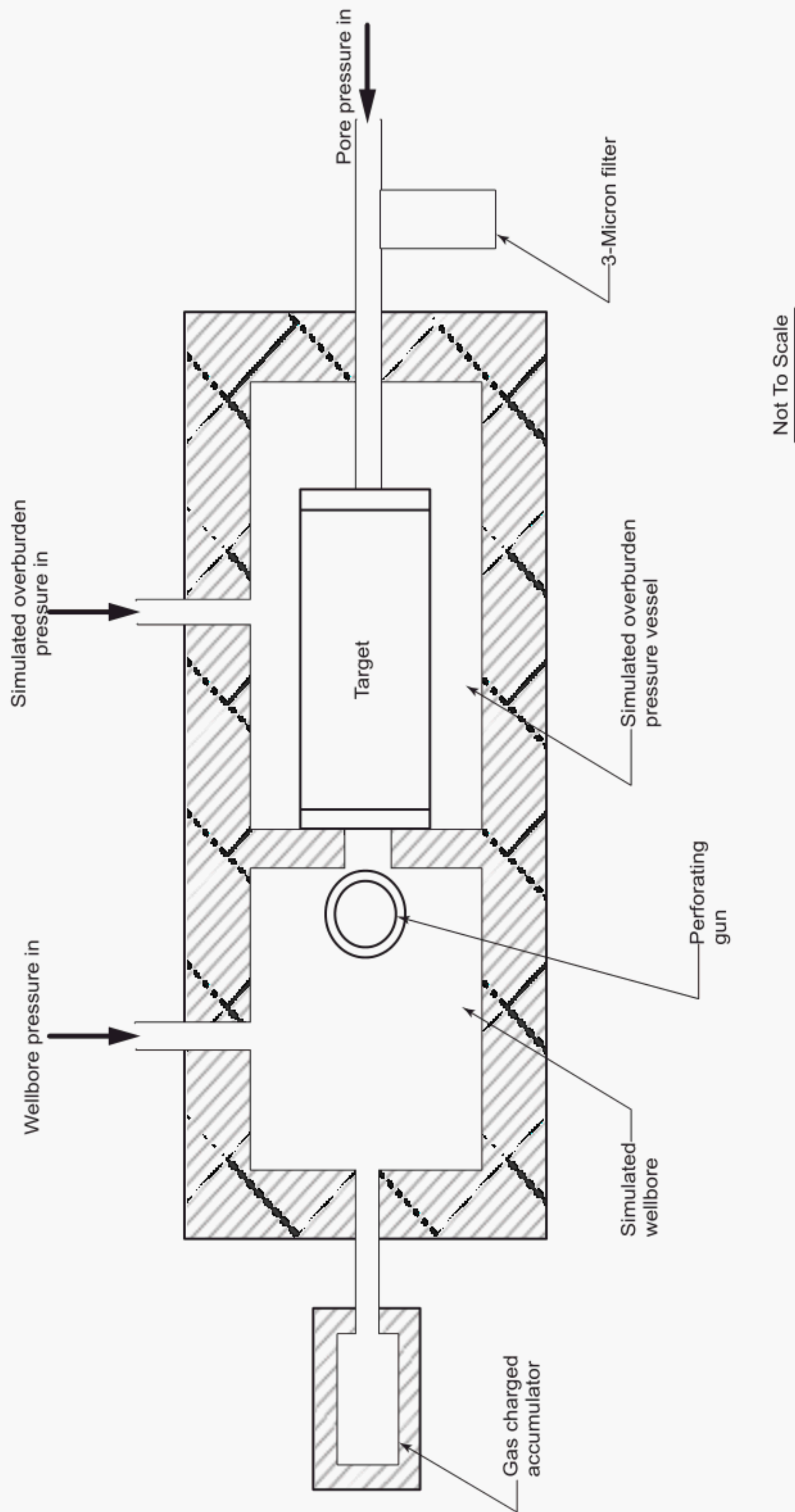


Figure A.3—Schematic of Typical Testing Equipment

APPENDIX B—PERMEABILITY MEASUREMENT—SECTION 4 TESTING

B.1 Axial Flow

Permeability can be measured using a conventional Hassler permeameter as shown schematically in Figure B.1. Flow enters the apparatus through one end cap and is distributed over the end of the core through a system of screens and grooves. Fluid is collected at the opposite end through a similar end cap. The entire apparatus is pressurized to obtain the desired confining pressure on the sample. The data are reduced to permeability using Equation 4-3.

$$K = 1.84 \times 10^3 \frac{Q\mu L}{R^2 \Delta P} \quad (4-3)$$

where

K = permeability, md,

Q = flow rate, cm³/sec,

μ = viscosity, cp,

L = core length, in.,

R = core radius, in.,

ΔP = differential pressure corrected for the flow system pressure drop, psi.

B.2 Flow Across the Core Diameter

Flow across the core diameter provides a measure of permeability with flow in a direction similar to that in a radial flow target. Fluid is introduced into a 90° segment along one side of the sample, flows across the sample, and exists through a similar segment on the opposite side (refer to Figure B.2). The segments may be constructed in a manner similar to that used in Appendix A, Section A.2, employing proppant or rods to provide a flexible, permeable zone. The test zone L' should cover only the expected depth of the perforation as shown in Figure B.2. The entire apparatus is pressurized to obtain the desired confining pressure on the sample.

The flow data are converted to permeability using Equation 4-4:

$$K = 5.79 \times 10^3 \frac{Q\mu}{L' \Delta P} \quad (4-4)$$

where

K = permeability, md,

Q = measured flow rate, cm³/sec,

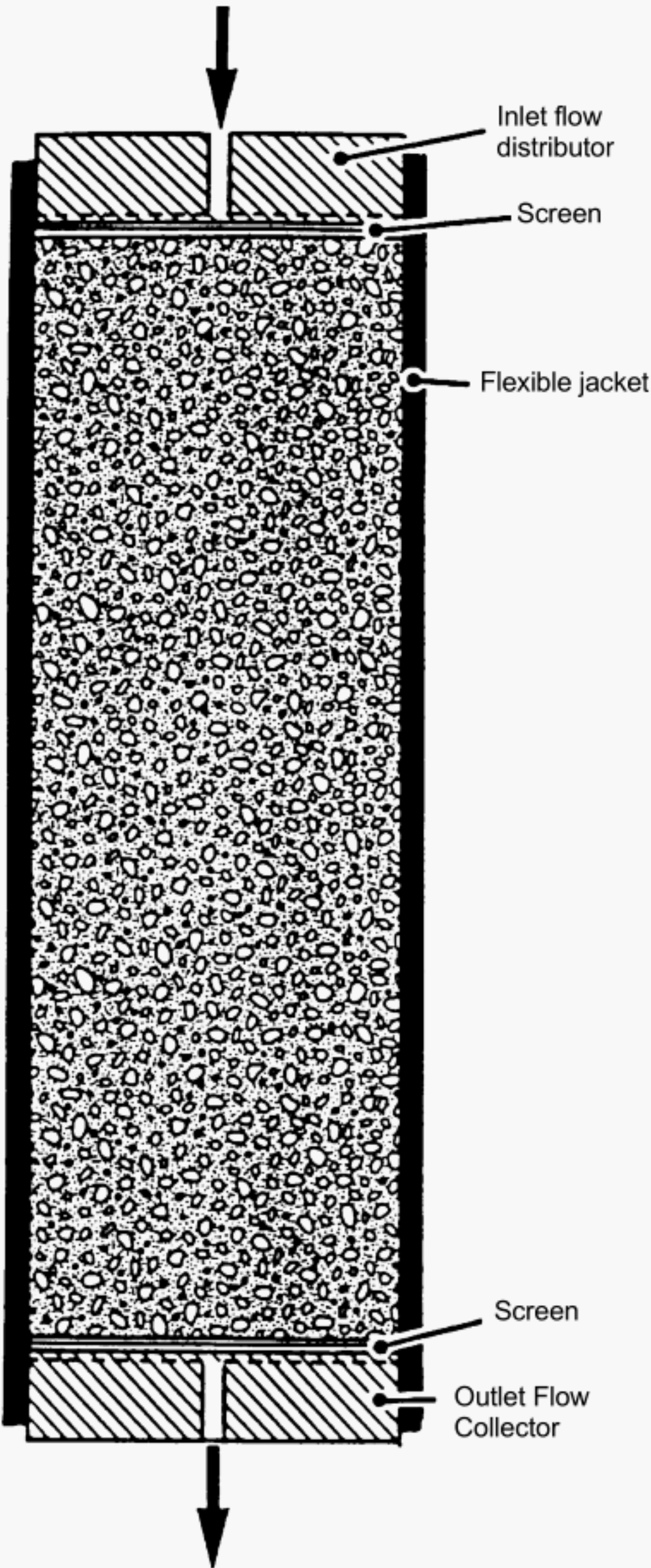
m = fluid viscosity, cp,

L' = length along the core of the test zone, in.,

ΔP = differential pressure corrected for flow system pressure drop, psi.

B.3 Variable Permeability

In a core cut with the axis perpendicular to bedding, permeability may vary along the length of the perforation. This may affect distribution of flow into the perforation. In such cases the variation of permeability along the expected length of the perforation may be measured by sequentially blocking off flow along the core or in a separately drilled ideal perforation. Alternatively, small plugs may be taken laterally along the core.



Not To Scale

Figure B.1—Typical Axial-Flow Permeability Equipment

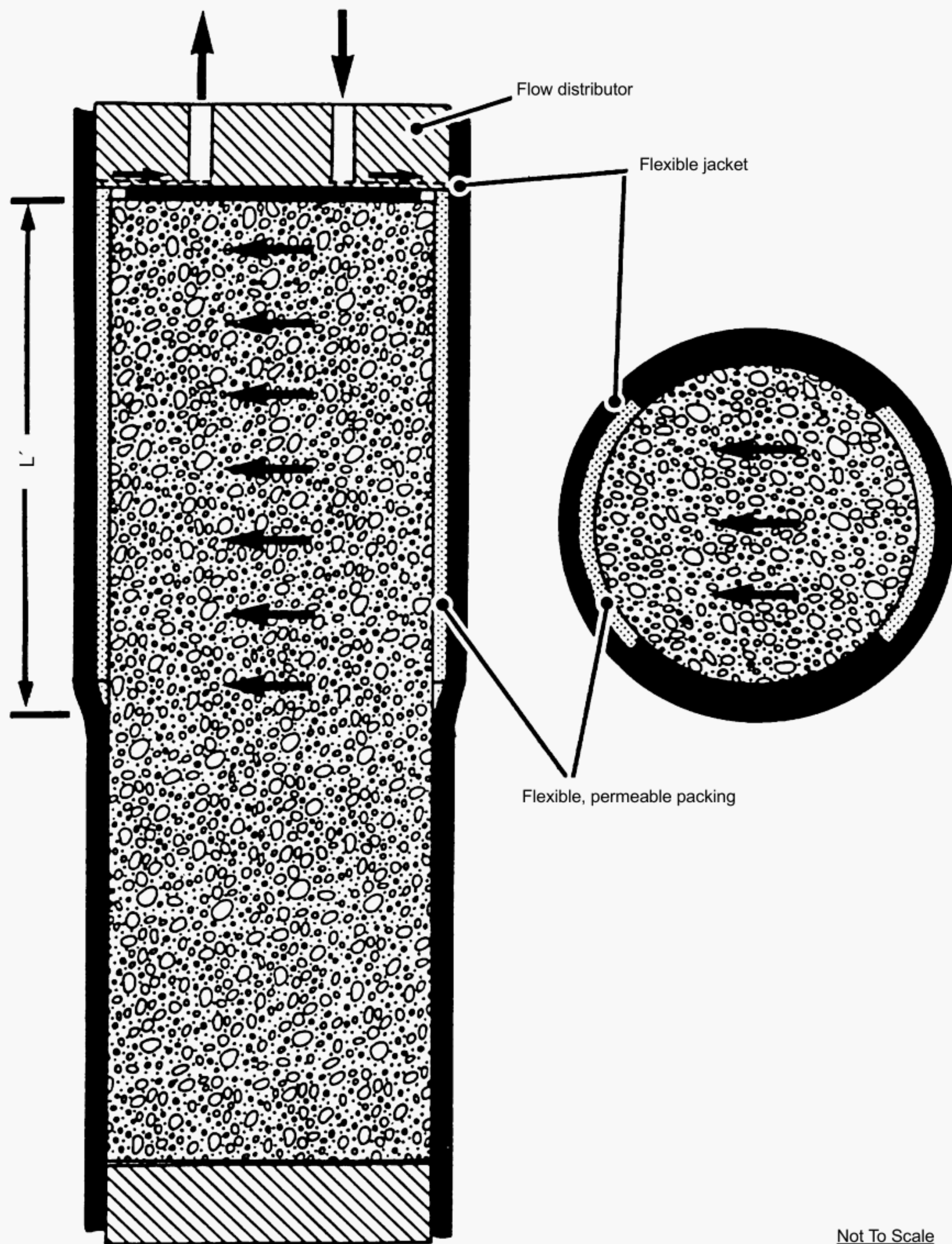


Figure B.2—Typical Diametral Flow Permeameter

APPENDIX C—DATA REDUCTION; EXPECTED FLOW RATES—SECTION 4 TESTING

C.1 Introduction

This Appendix contains guidance for calculating expected flow rates in the various flow geometries described in Appendix A. More refined calculations using direct finite element modeling of the observed perforation may be substituted, if desired.

C.2 Radial Flow Target

(Refer to Appendix A, section A.2) Equation 4-5 is applicable where permeability is uniform and cylindrically symmetrical. If the target meets the criterion of 4.2.c, the error will be small whether flow is allowed through the rear end of the sample or not. Flow rate may be calculated by:

$$Q_c = 1.08 \times 10^{-3} \frac{\Delta P}{\mu} \left[\frac{K_1 D}{\ln\left(\frac{R}{r}\right)} + \frac{K_2 r R}{R - r} \right] \quad (4-5)$$

where

- Q_c = flow rate, cm³/sec.,
- ΔP = differential pressure, psi,
- μ = fluid viscosity, cp,
- D = perforation depth, in.,
- r = perforation radius, in.,
- R = sample radius, in.

The permeability values, K^1 and K^2 (in millidarcies), are derived from measured permeabilities parallel and perpendicular to bedding. The exact method used is at the discretion of the testing company and will depend on the target orientation. The following formulae shall be used for tests meeting standard conditions of 4.11, and may be used for other tests at the discretion of the testing company.

C.2.1 For cores oriented with axes parallel to bedding:

$$K_1 = K_2 = (K_{\perp} K_{//})^{1/2} \quad (4-6)$$

C.2.2 for cores oriented with axes perpendicular to bedding:

$$\begin{aligned} K_1 &= K_{//} \\ K_2 &= (K_{\perp} K_{//}^2)^{1/3} \end{aligned} \quad (4-7)$$

The values of K_1 and K_2 used shall be recorded, along with the measured values parallel and perpendicular to bedding.

C.3 Axial Flow

(Refer to Appendix A, section A.3). This geometry requires finite element analysis for calculating ideal flow to determine CFE.

APPENDIX D—API REGISTERED PERFORATOR SYSTEMS

Applications for Perforator System Registration are available from API. To obtain an application, please access the API Certification Programs web site http://www.api.org/programs_services/quality/ or call (202) 962-4791 or write to API Certification Programs, 1220 L Street, NW, Washington, DC 20005.

.....

Additional copies are available through IHS

Phone Orders: 1-800-854-7179 (Toll-free in the U.S. and Canada)
303-397-7956 (Local and International)
Fax Orders: 303-397-2740
Online Orders: global.ihs.com

Information about API Publications, Programs and Services
is available on the web at **www.api.org**



1220 L Street, NW
Washington, DC 20005-4070
USA

202.682.8000

Product No. G019B2